

PART 2 - PLAN 59R-12109

28
820

LOT
PLAN

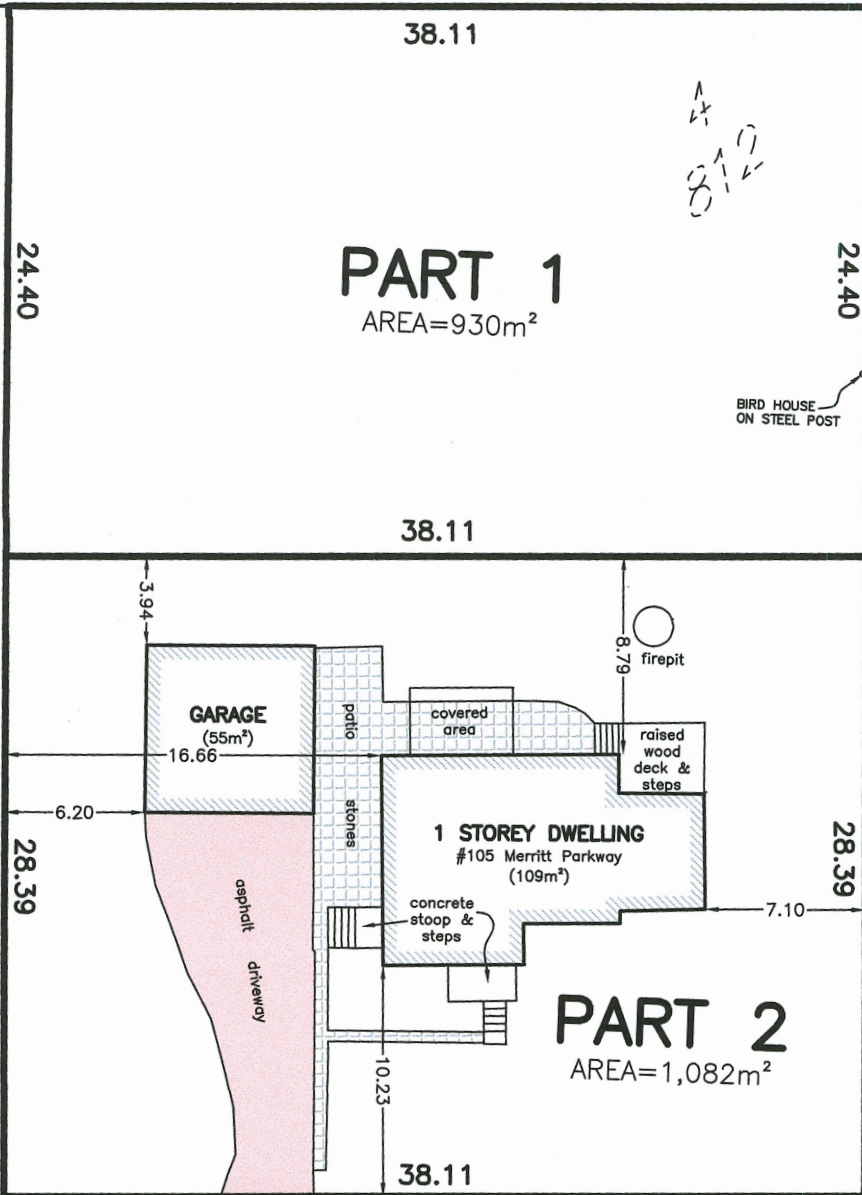
PART 3 - PLAN 59R-12109

PART 4 - PLAN 59R-12109
SUBJECT TO CITY OF PORT COLBORNE EASEMENT

CORVETTE
20.12 WIDE
STREET

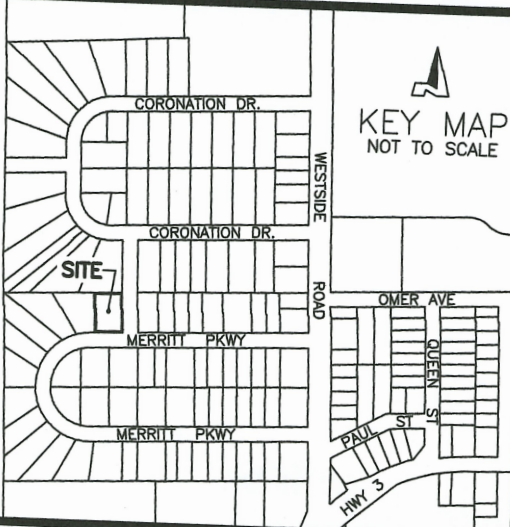


LOT
PLAN



MERRITT 20.12 WIDE PARKWAY

NOTE:
SUBJECT AND ABUTTING LAND USE - RESIDENTIAL



SKETCH

PREPARED FOR CONSENT APPLICATION

PART OF LOT 4
PLAN 812

IN THE
CITY OF PORT COLBORNE
REGIONAL MUNICIPALITY OF NIAGARA
SCALE 1 : 400 (METRIC)

NOTE: THIS SKETCH IS PREPARED FROM COMPILED AND
CALCULATED INFORMATION, NOT FROM AN ACTUAL SURVEY.
DO NOT SCALE FROM THIS DRAWING.
ALL MEASUREMENTS ARE +/- MEASUREMENTS.

CAUTION: THIS IS NOT A PLAN OF SURVEY AND SHALL NOT BE
USED EXCEPT FOR THE PURPOSE INDICATED IN THE TITLE BLOCK.

"THIS IS NOT AN ORIGINAL COPY UNLESS EMBOSSED WITH SEAL"

© COPYRIGHT 2023

THE REPRODUCTION, ALTERATION OR USE OF THIS SKETCH, IN
WHOLE OR IN PART WITHOUT THE EXPRESS WRITTEN PERMISSION OF
CHAMBERS AND ASSOCIATES SURVEYING LTD. IS STRICTLY PROHIBITED.

Nov. 30, 2023
DATE

Don Chambers
DONALD G. CHAMBERS, B. Sc., O.L.S.

**CHAMBERS AND ASSOCIATES
SURVEYING LTD**

12 THOROLD ROAD EAST
WELLAND ONTARIO
L3C 3T2

(905) 735-7841 / 735-7844
FAX (905) 735-7333
www.casl-surveying.com

DWG 87090-6_SEV

FILE 87-90-6