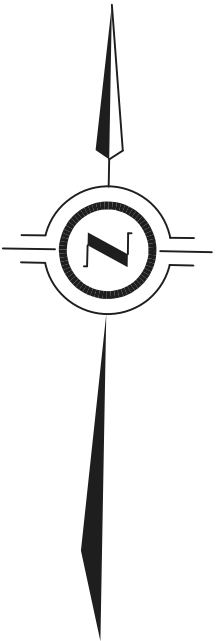
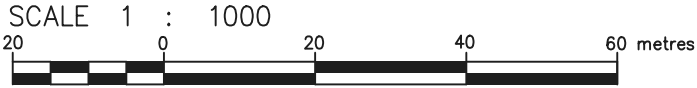




PLAN SHOWING LEASE AREA

PART OF LOT 14
CONCESSION 1
GEOGRAPHIC TOWNSHIP OF HUMBERSTONE
CITY OF PORT COLBORNE
REGIONAL MUNICIPALITY OF NIAGARA



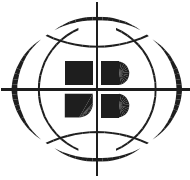
STRUCTURES:
65m SELF SUPPORT TOWER
15mX15m LEASE AREA

TOWER
LATITUDE NAD 83
N 42°52'38.0" (42.877244)
LONGITUDE NAD 83
W 79°11'02.6" (-79.184047)

HYDRO CONNECTION AND ROUTING TO BE
DETERMINED BY QUALIFIED PERSONNEL IN
CONSULTATION WITH LOCAL AUTHORITY.

SHARED TOWER INC.

SITE: STC0629



J.D.BARNES
LIMITED
LAND INFORMATION SPECIALISTS
140 RENFREW DRIVE, SUITE 100, MARKHAM, ON L3R 6B3
T: (905) 477-3600 F: (905) 477-3882 www.jdbarnes.com

SURVEYING
MAPPING
GIS

DRAWN
CHECKED
DATED
JAN. 30, 2024

Ref. No.
24-15-003-00