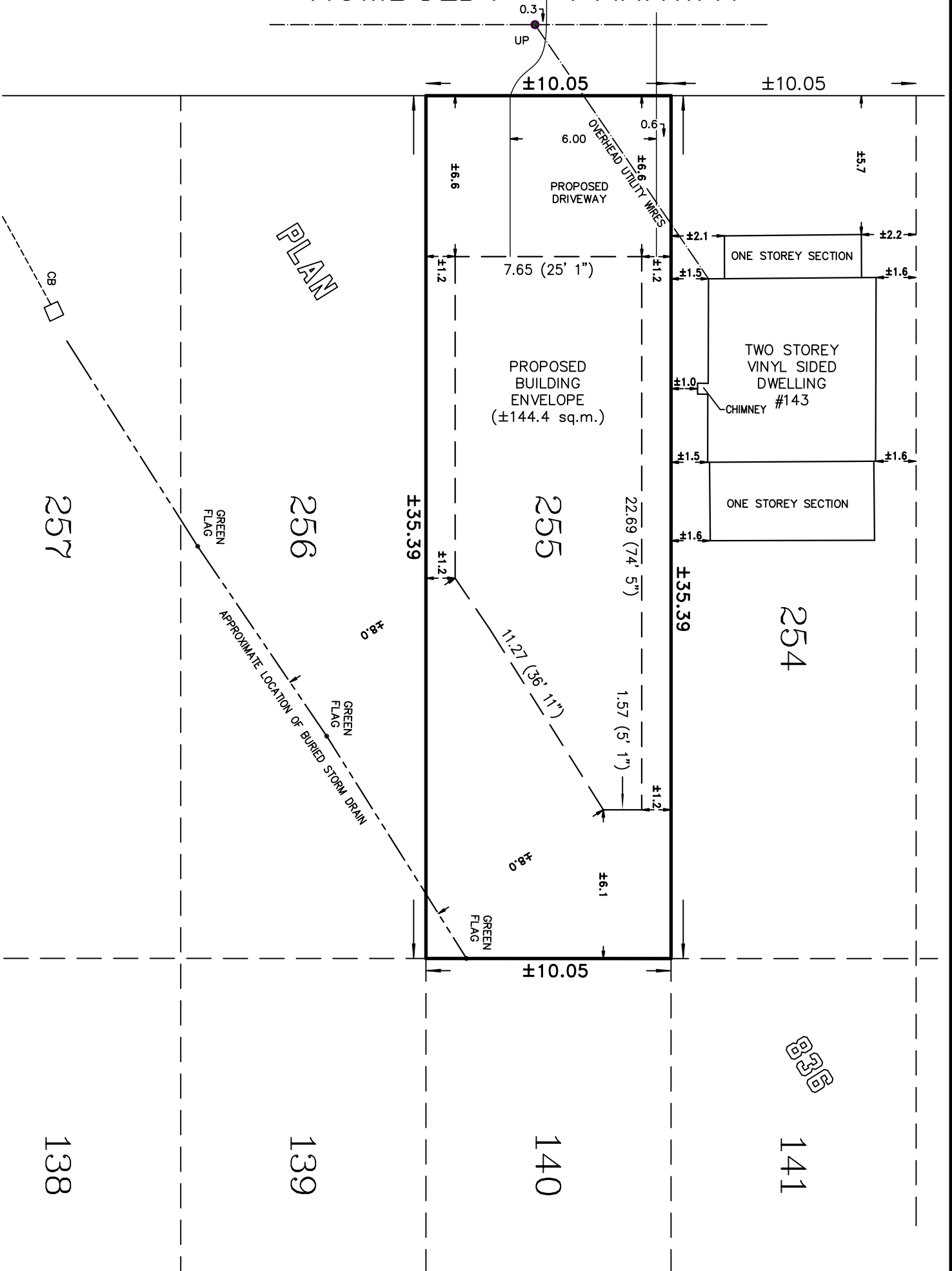


# HUMBOLDT PARKWAY



**LANTHIER & GILMORE SURVEYING LTD.**  
 173 CLARENCE ST. PORT COLBORNE, ONT. (905) 835-5477

SKETCH OF BUILDING ENVELOPE

LOT 255  
 PLAN 836  
 IN THE  
 CITY OF PORT COLBORNE  
 REGIONAL MUNICIPALITY OF NIAGARA

DRAWN BY: CM                      CHECKED BY: MG  
 SCALE: 1:200                      SURVEY 22-911