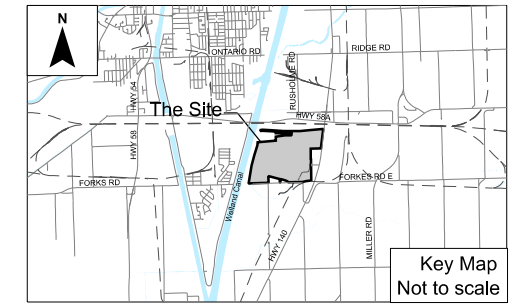
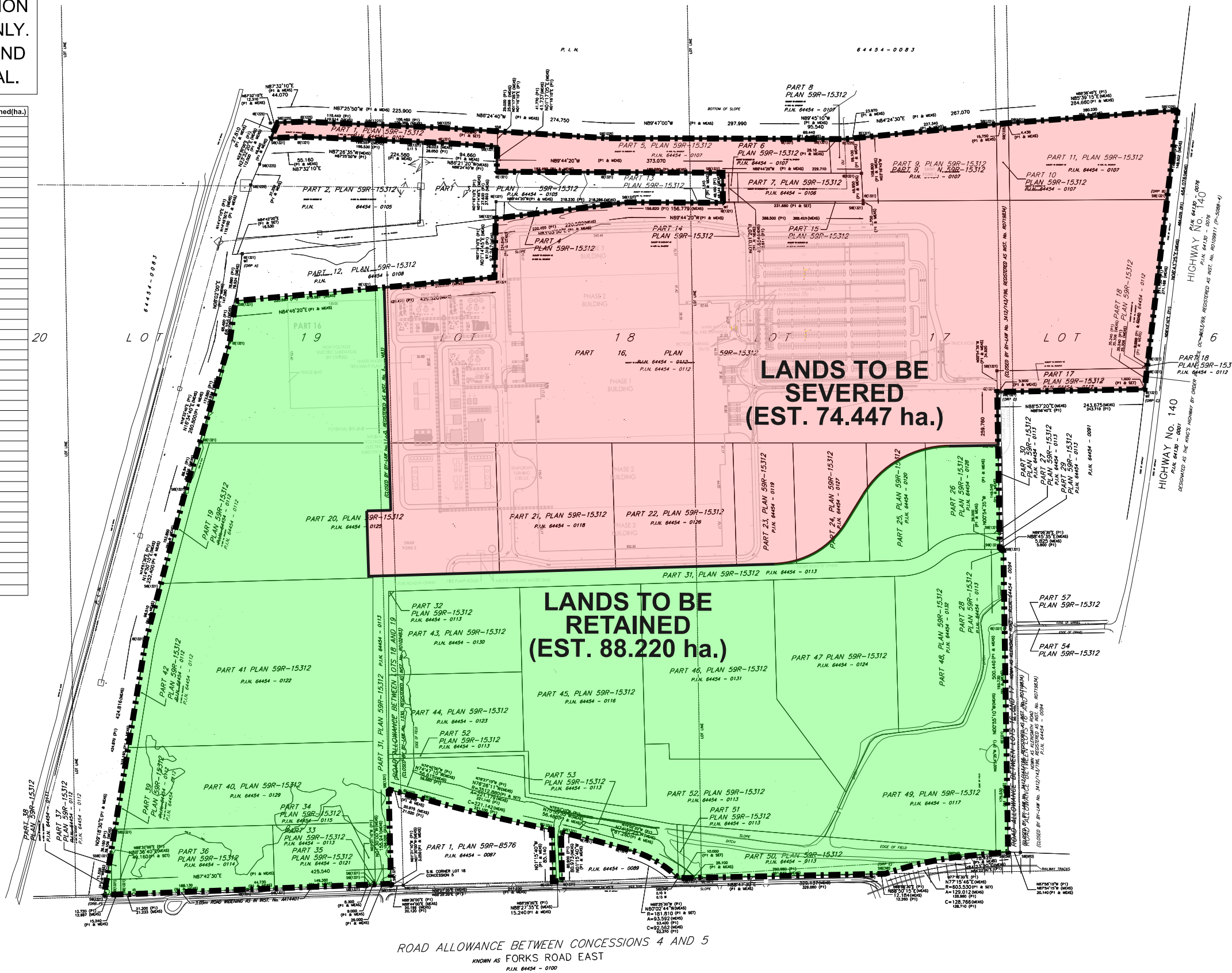


DRAFT

FOR DISCUSSION
PURPOSES ONLY.
PRIVILEGED AND
CONFIDENTIAL.

Part	Area Severed (ha.)	Area Retained (ha.)
1	0.922	0.000
2	3.198	0.000
3	0.120	0.000
4	0.965	0.000
5	0.286	0.000
6	2.594	0.000
7	0.255	0.000
8	3.703	0.000
9	0.004	0.000
10	0.056	0.000
11	44.865	6.733
12	0.860	0.000
13	0.004	0.000
14	0.000	0.368
15	4.252	7.095
16	4.052	0.000
17	4.104	0.000
18	1.982	0.006
19	1.819	0.571
20	0.339	1.534
21	0.066	1.787
22	0.000	0.004
23	0.000	0.004
24	0.000	3.978
25	0.000	0.004
26	0.000	0.004
27	0.000	0.114
28	0.000	1.806
29	0.000	2.678
30	0.000	0.165
31	0.000	0.045
32	0.000	0.208
33	0.000	5.372
34	0.000	9.853
35	0.000	4.423
36	0.000	3.029
37	0.000	2.913
38	0.000	7.061
39	0.000	6.893
40	0.000	5.806
41	0.000	4.066
42	0.000	5.866
43	0.000	2.789
44	0.000	0.088
45	0.000	4.177
46	0.000	3.379
TOTAL	74.447	88.220

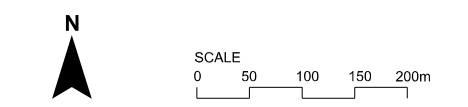


- LEGEND**
- Subject Lands
 - Proposed Site Limit (MZO)
 - Lands to be Severed (Est. 74.447 ha.)
 - Lands to be Retained (Est. 88.220 ha.)

DRAWN / REVISED

10 JUL 2024 First Draft

SEVERANCE PLAN
HIGHWAY 58A & HIGHWAY 140
CITY OF PORT COLBORNE
REGION OF NIAGARA



- Notes:
- Property Boundary is based on survey completed by MTE (Feb, 2024).
 - Not based on engineering, floodplain or grading analysis.
 - Areas and dimensions are estimated. Areas to be severed and retained to be confirmed via survey.
 - Site Plan for Prepared by Stantec (June 18, 2024).

File Number: 11746
Date: 2024-07-10
Drawn By: NDC
Planner: MQ
CAD: 2024-07-10_Severance Plan_11746.dgn

Drawing
SP