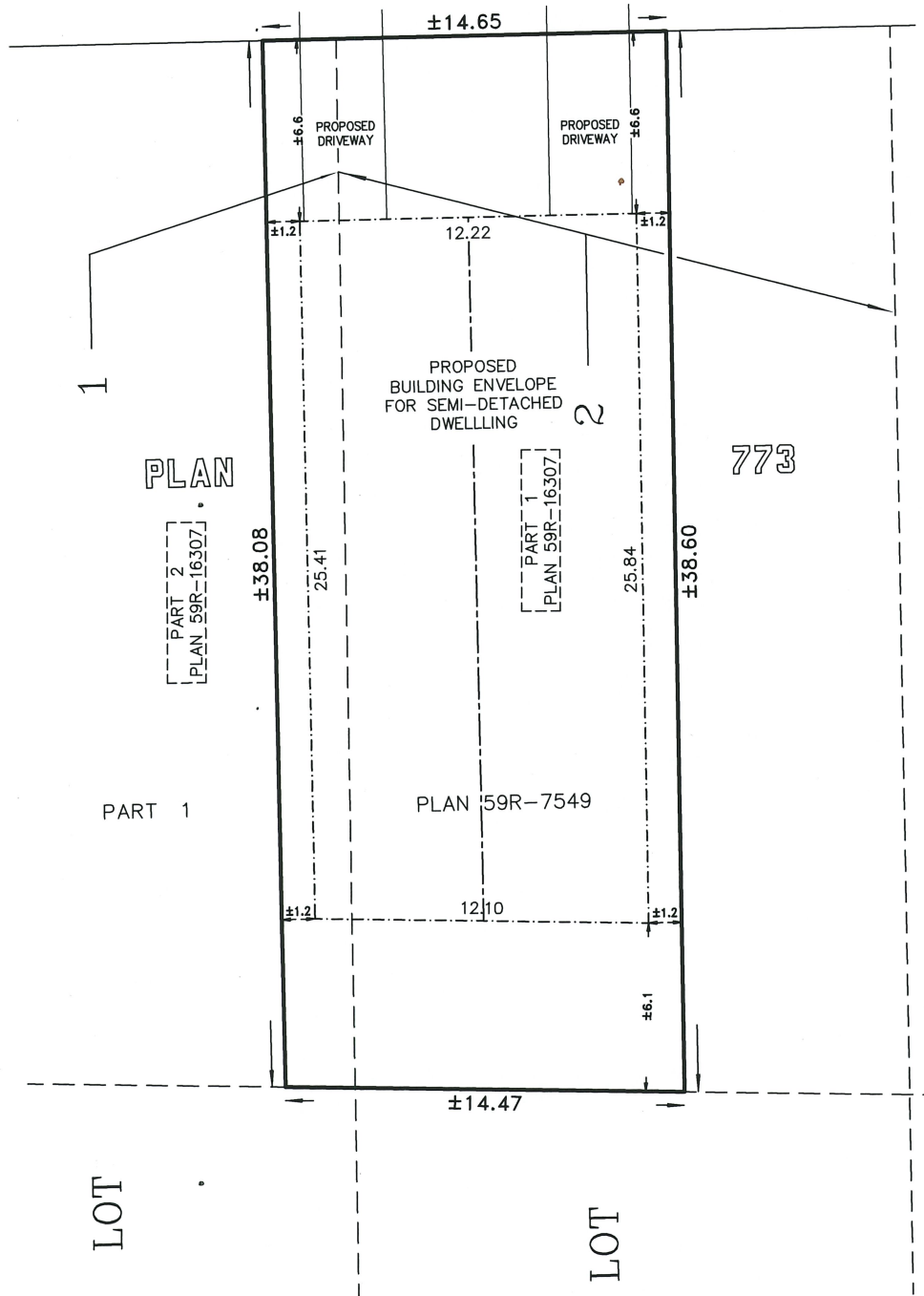


FIELDEN AVENUE



PLAN

773

1

2

PART 2  
[PLAN 59R-16307]

PART 1  
[PLAN 59R-16307]

PART 1

PLAN 59R-7549

LOT

LOT



**LANTHIER & GILMORE SURVEYING LTD.**  
173 CLARENCE ST. PORT COLBORNE, ONT. (905) 835-5477

SKETCH OF  
PART OF LOT 2  
PLAN 773  
IN THE  
CITY OF PORT COLBORNE  
REGIONAL MUNICIPALITY OF NIAGARA

DRAWN BY: CM                      CHECKED BY: MG  
SCALE: 1:200                      SURVEY 22-937