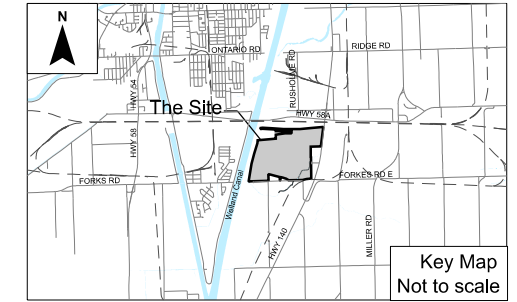


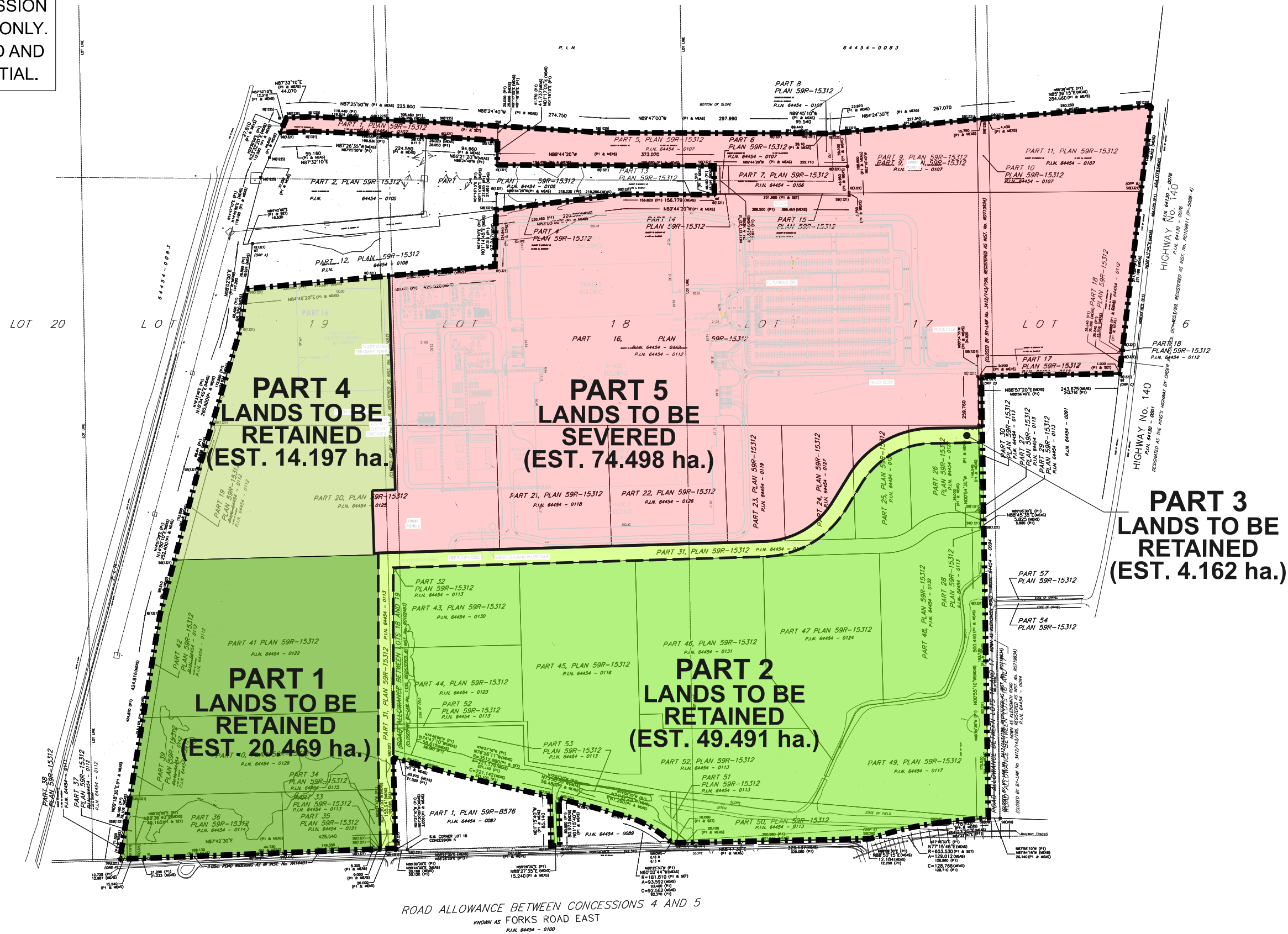
# DRAFT

FOR DISCUSSION  
PURPOSES ONLY.  
PRIVILEGED AND  
CONFIDENTIAL.



### LEGEND

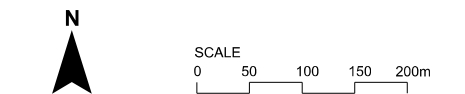
- Subject Lands
- Proposed Site Limit (MZO)
- Lands to be Severed (Est. 74.498 ha.)
- Lands to be Retained - Part 1 (Est. 20.469 ha.)
- Lands to be Retained - Part 2 (Est. 49.491 ha.)
- Lands to be Retained - Part 3 (Est. 4.162 ha.)
- Lands to be Retained - Part 4 (Est. 14.197 ha.)



### DRAWN / REVISED

19 AUG 2024	Revised boundaries and areas as per Client's Comments
15 AUG 2024	Revise area boundaries; Re-calculate Areas
10 JUL 2024	Issued for Submission
10 JUL 2024	First Draft

## SEVERANCE PLAN HIGHWAY 58A & HIGHWAY 140 CITY OF PORT COLBORNE REGION OF NIAGARA



File Number: 11746  
Date: 2024-08-19  
Drawn By: NDC  
Planner: MQ  
CAD: 2024-08-15\_Severance Plan\_11746.dgn

Drawing  
**SP**

### Notes:

- Property Boundary is based on survey completed by MTE (Feb, 2024).
- Not based on engineering, floodplain or grading analysis.
- Areas and dimensions are estimated. Areas to be severed and retained to be confirmed via survey.
- Site Plan for Prepared by Stantec (June 18, 2024).