

FOR 6.0mX26.82m LOTS

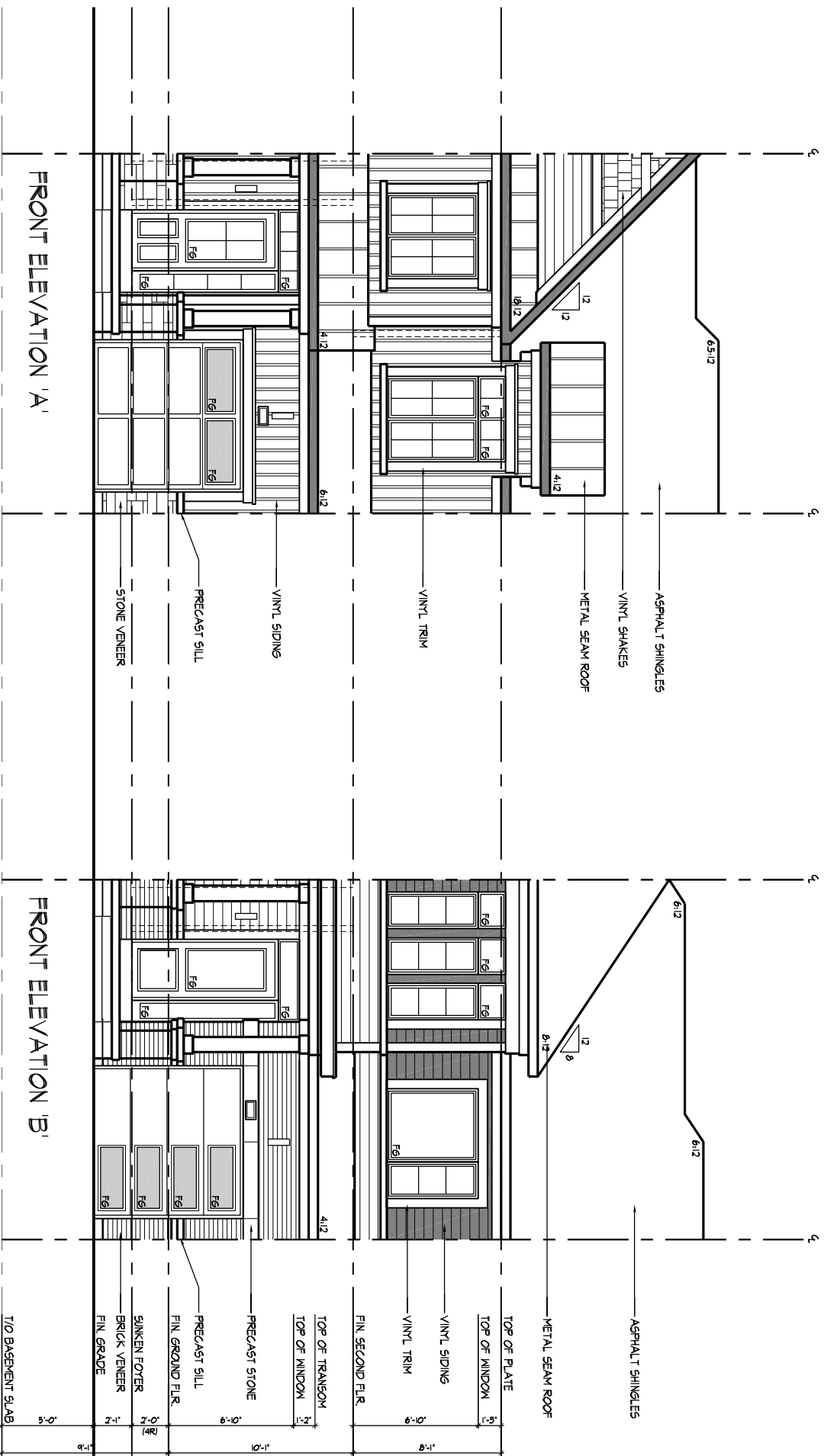
ZONING STANDARDS	
MAX. HOUSE WIDTH	19'-8"
MAX. LENGTH GARAGE SIDE	48'-7"
MAX. LENGTH HOUSE SIDE	48'-7"
MAX. COVERAGE W/ PORCH	N/A
MAX. COVERAGE W/O PORCH	N/A
MAX. G.F.A.	N/A
MAX. HEIGHT	11 m
MIN. GARAGE WIDTH	3.5m x 5.2m
MAX. GARAGE WIDTH	N/A
MAX. GARAGE PROJ.	N/A

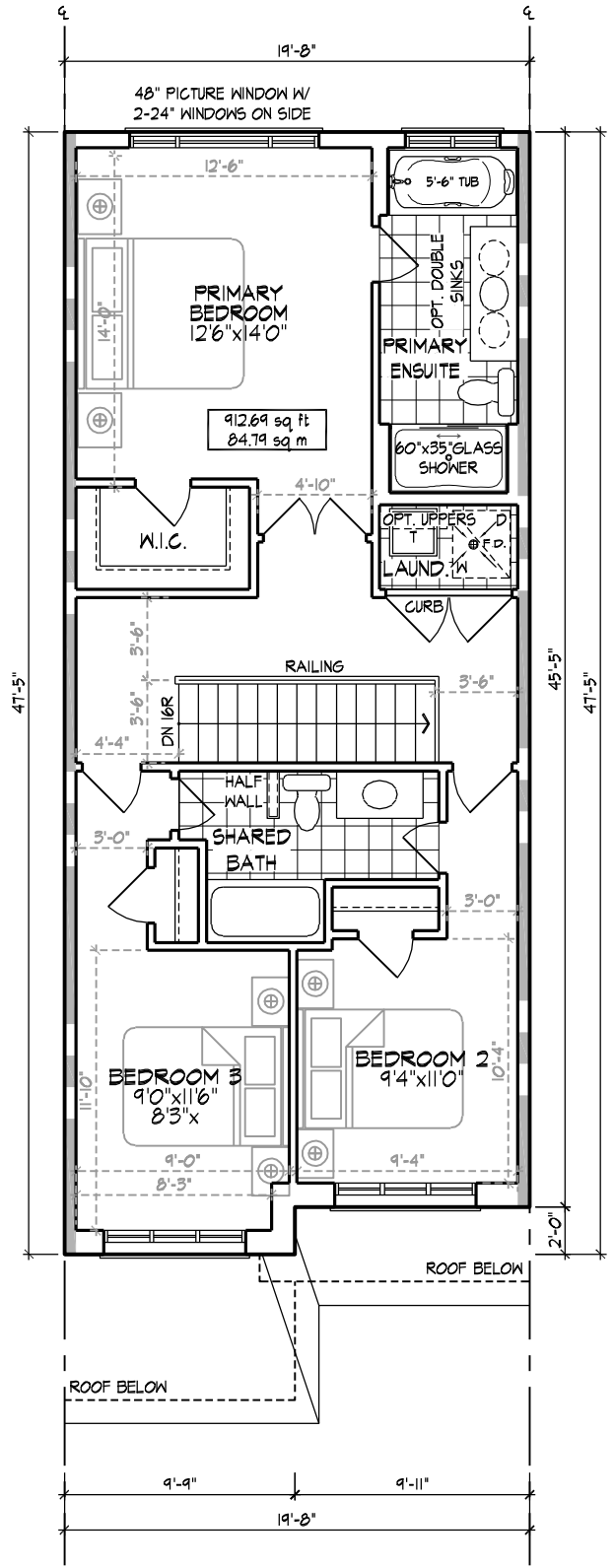
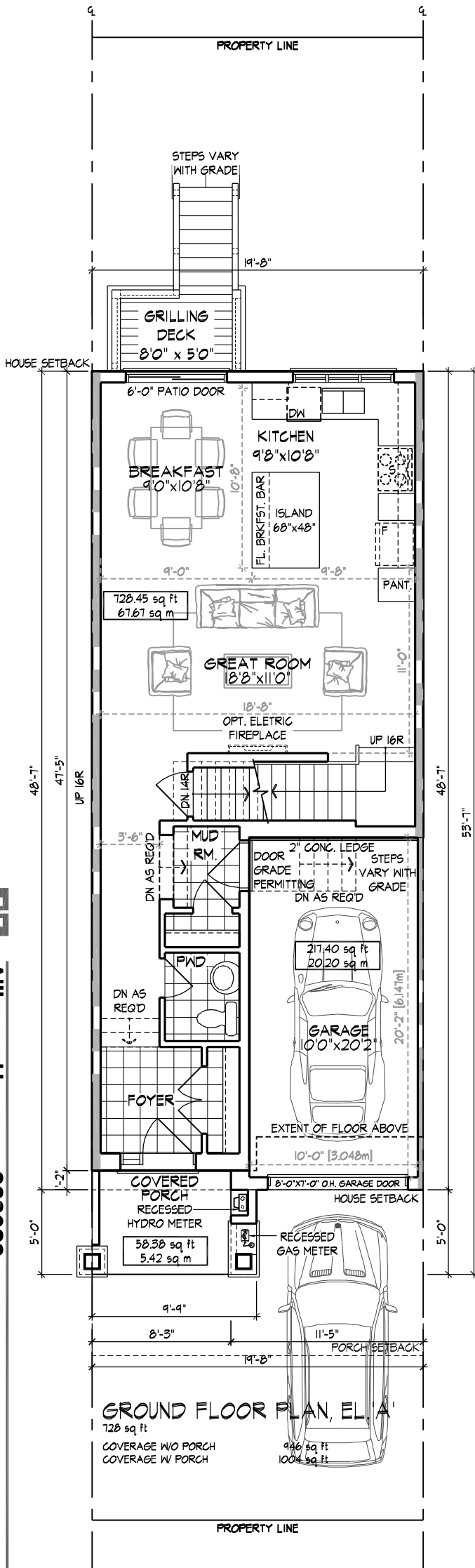


Alliance Homes - 223089
 South Coast Homes, Port Colborne, Ontario
 8966 Woodbine Ave., Markham, ON L3R 0J7 ■ T 905.737.5133 ■ F 905.737.7326

MAR-2024
 AA ■ TARGET: 1450 SF
 AREA - EL. A: 1452 SF
 UNIT 2002

All drawings specifications, related documents and design are the copyright property of Hunt Design Associates (H.D.A.). Reproduction of this property in whole or in part is strictly prohibited without H.D.A.'s written permission.





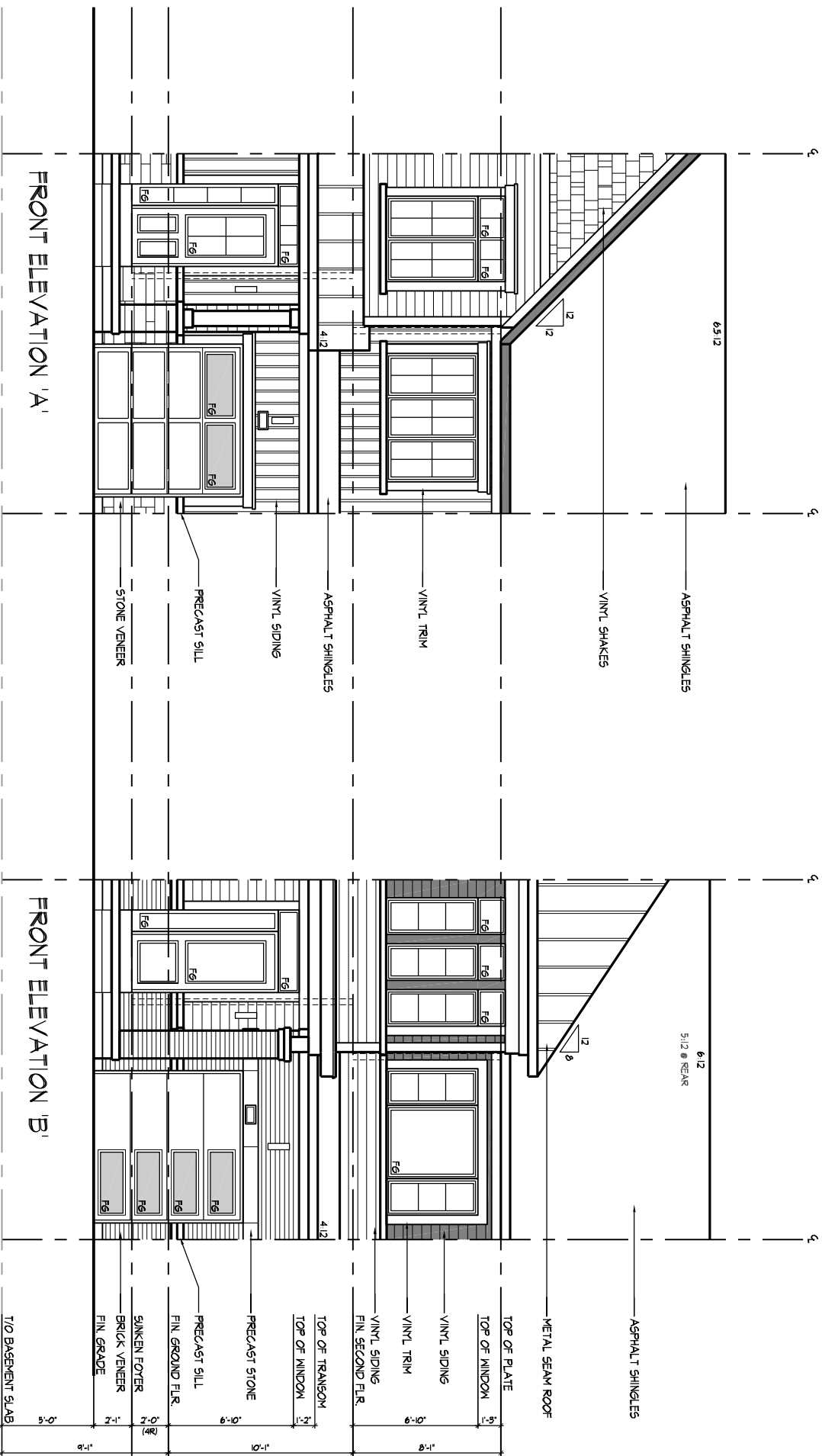
FOR 6.0mX26.82m LOTS

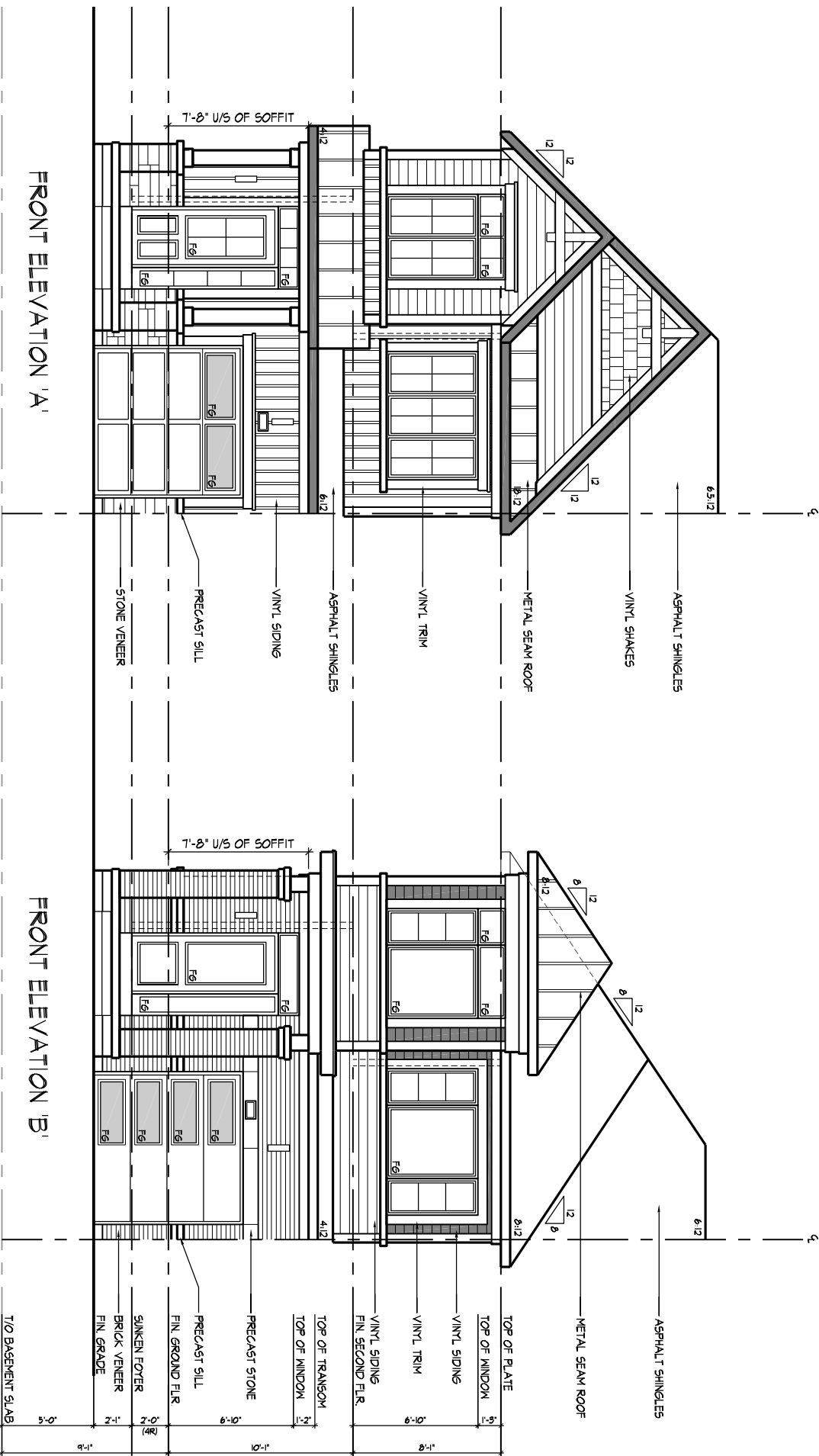
ZONING STANDARDS	
MAX. HOUSE WIDTH	19'-8"
MAX. LENGTH GARAGE SIDE	48'-7"
MAX. LENGTH HOUSE SIDE	48'-7"
MAX. COVERAGE W/ PORCH	N/A
MAX. COVERAGE W/O PORCH	N/A
MAX. G.F.A.	N/A
MAX. HEIGHT	11 m
MIN. GARAGE WIDTH	3.5m x 5.2m
MAX. GARAGE WIDTH	N/A
MAX. GARAGE PROJ.	N/A

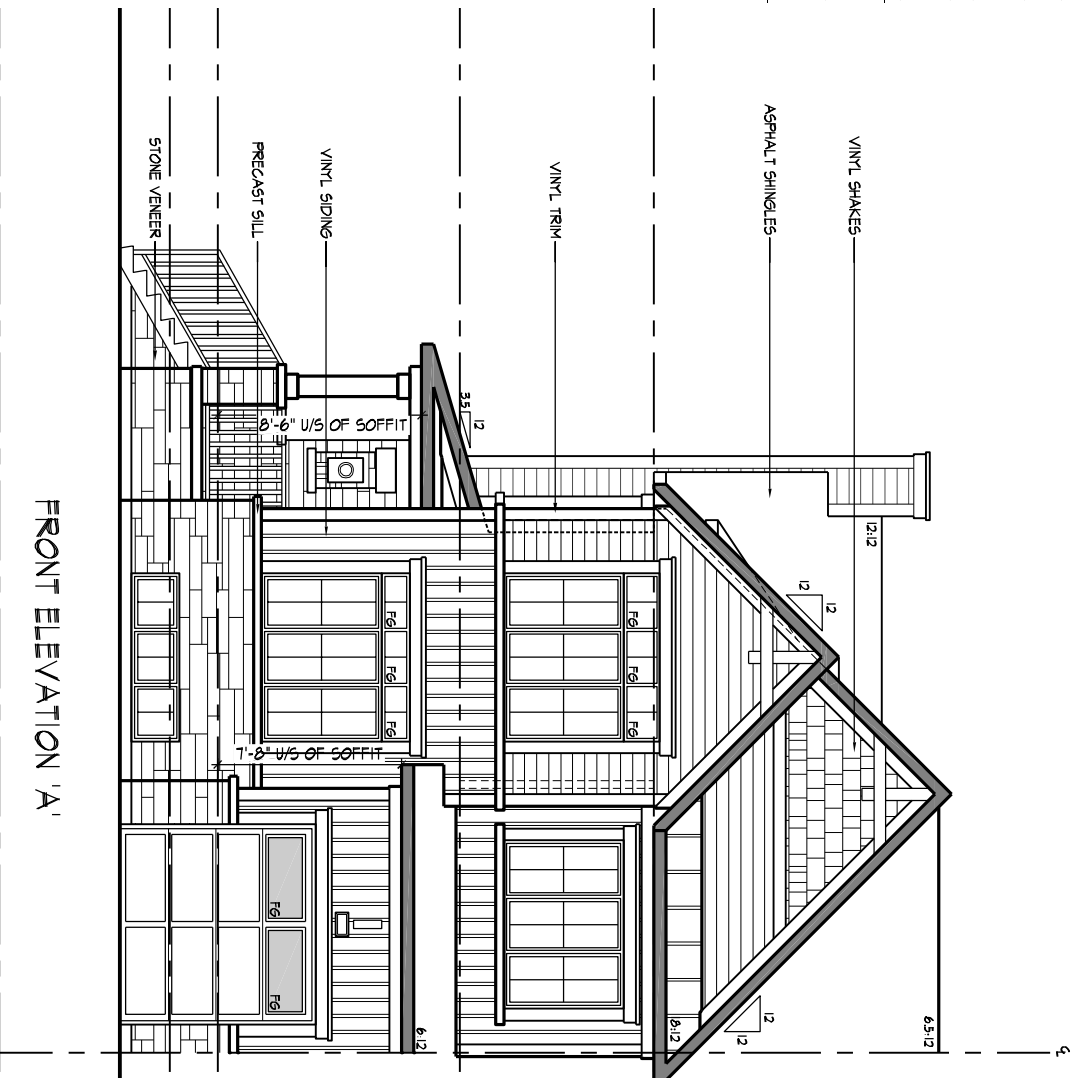
HUNT
 DESIGN ASSOCIATES INC.
 www.huntdesign.ca

Alliance Homes - 223089
 South Coast Homes, Port Colborne, Ontario
 8966 Woodbine Ave., Markham, ON L3R 0J7 | T 905.737.5133 | F 905.737.7326
 All drawings specifications, related documents and design are the copyright property of Hunt Design Associates (H.D.A.). Reproduction of this property in whole or in part is strictly prohibited without H.D.A.'s written permission.

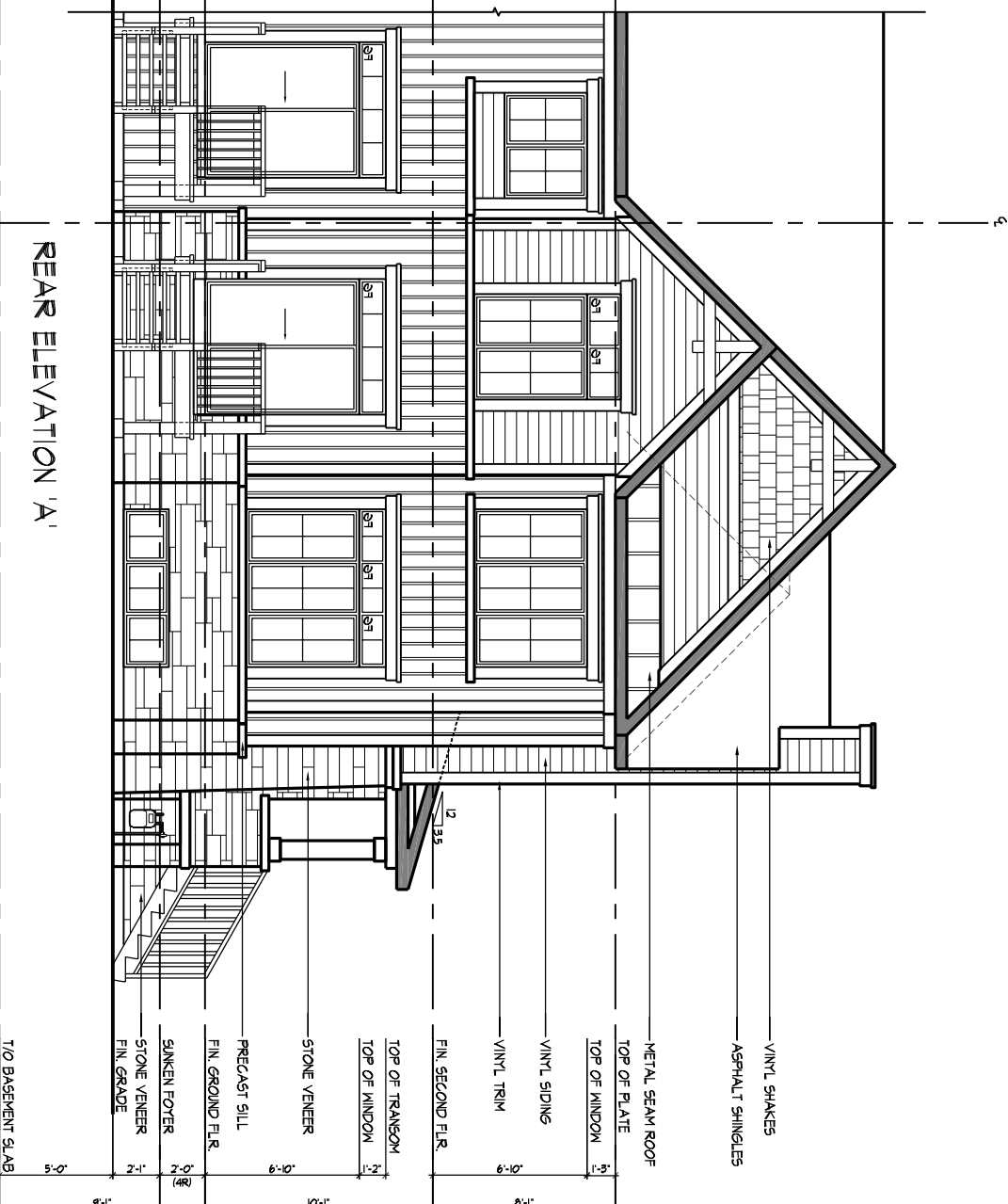
MAR-2024
 AA
 TARGET: 1650 SF
 AREA - EL. 'A' 1641 SF
 UNIT 2003





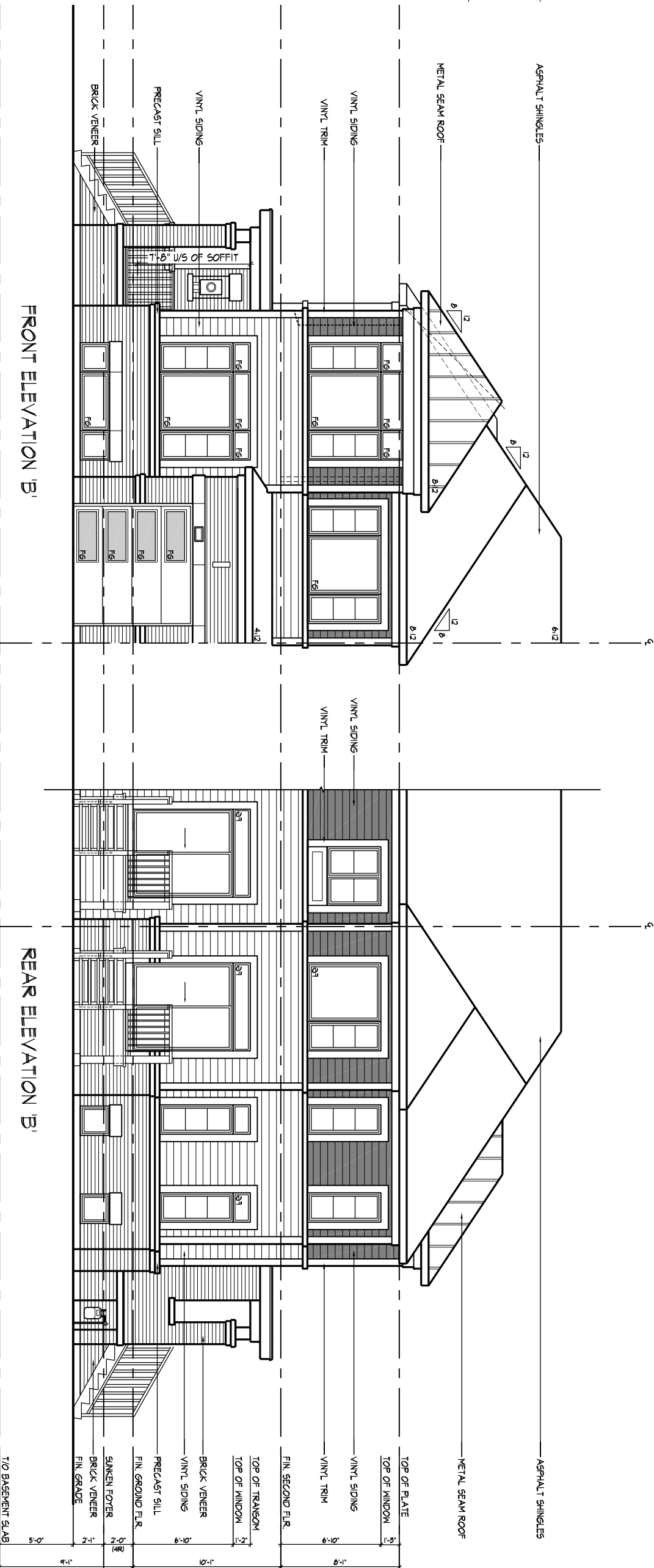


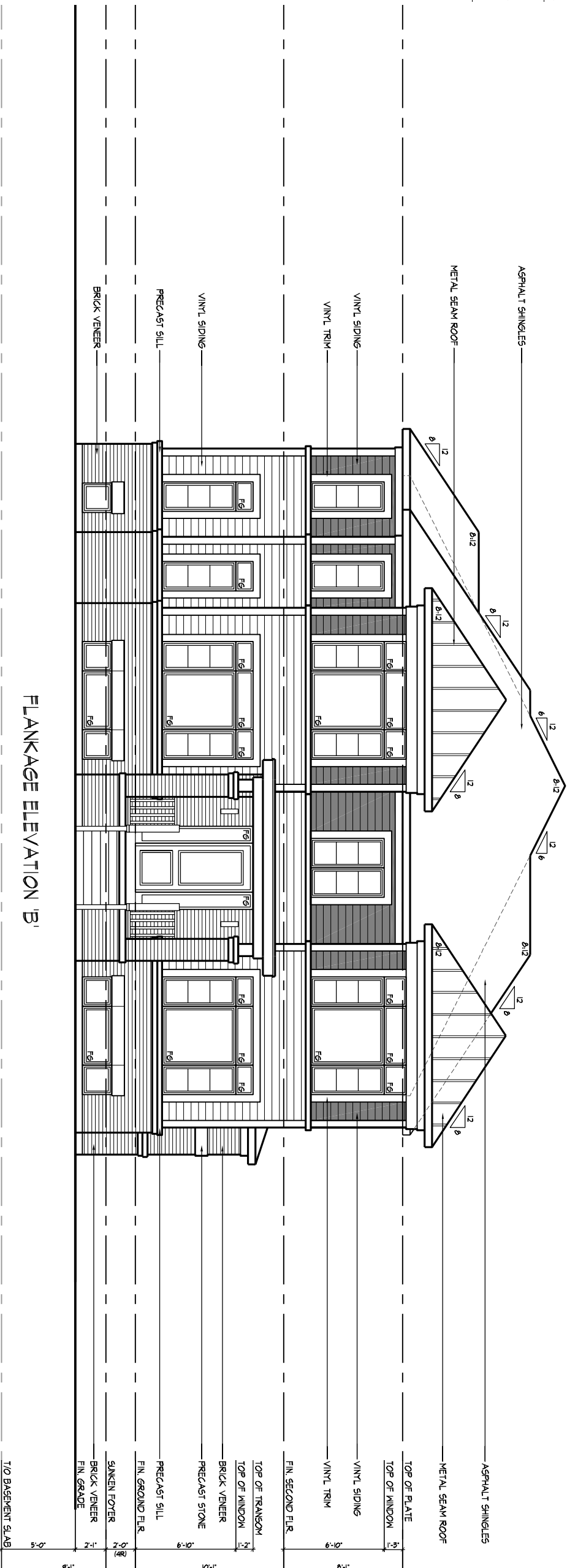
FRONT ELEVATION 'A'



REAR ELEVATION 'A'

- VINYL SHAKES
- ASPHALT SHINGLES
- METAL SEAM ROOF
- TOP OF PLATE
- TOP OF WINDOW
- VINYL SIDING
- VINYL TRIM
- FIN SECOND FLR.
- TOP OF TRANSOM
- TOP OF WINDOW
- STONE VENEER
- STONE VENEER
- PRECAST SILL
- FIN GROUND FLR.
- SUNKEN FORTER
- STONE VENEER
- FIN GRADE
- T/O BASEMENT SLAB





FLANKAGE ELEVATION 'B'

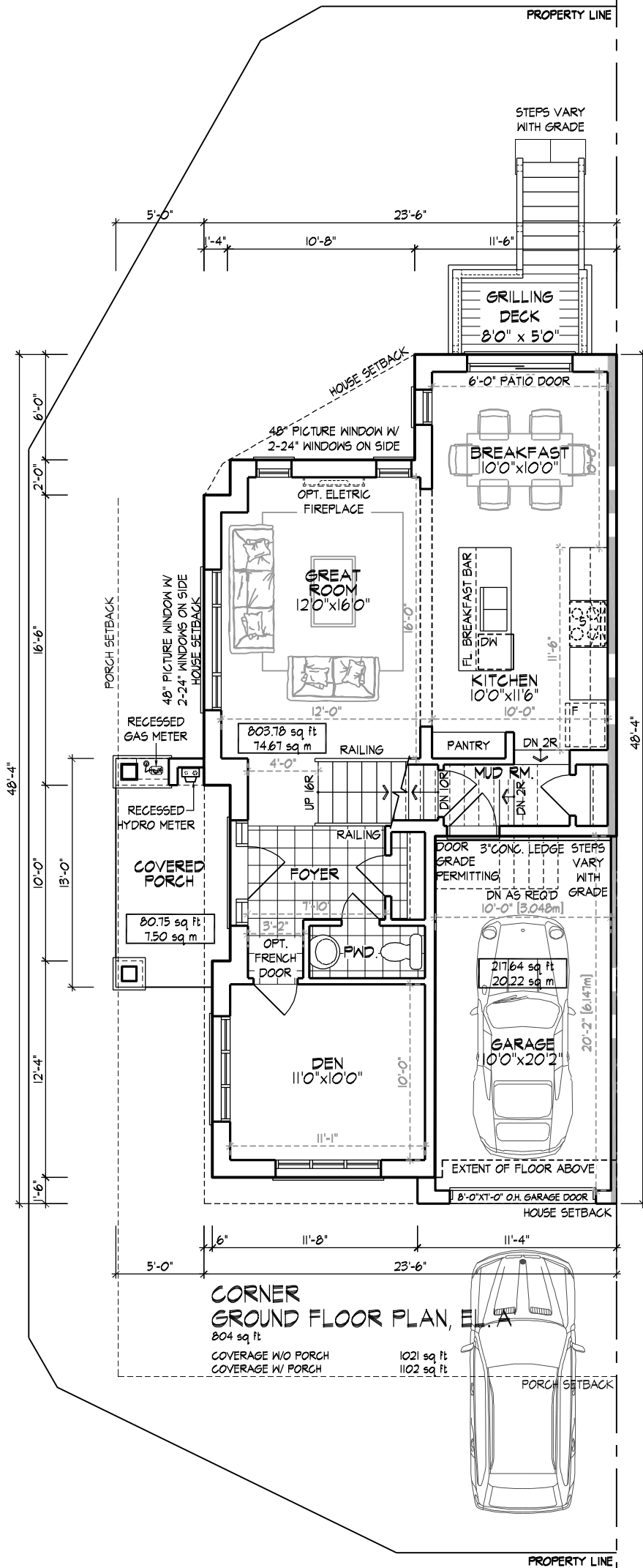


DESIGN ASSOCIATES INC.
www.huntidesign.ca

Alliance Homes - 223089
South Coast Homes, Port Colborne, Ontario
8966 Woodbine Ave., Markham, ON L3R 0J7 ■ T 905.737.5133 ■ F 905.737.7326

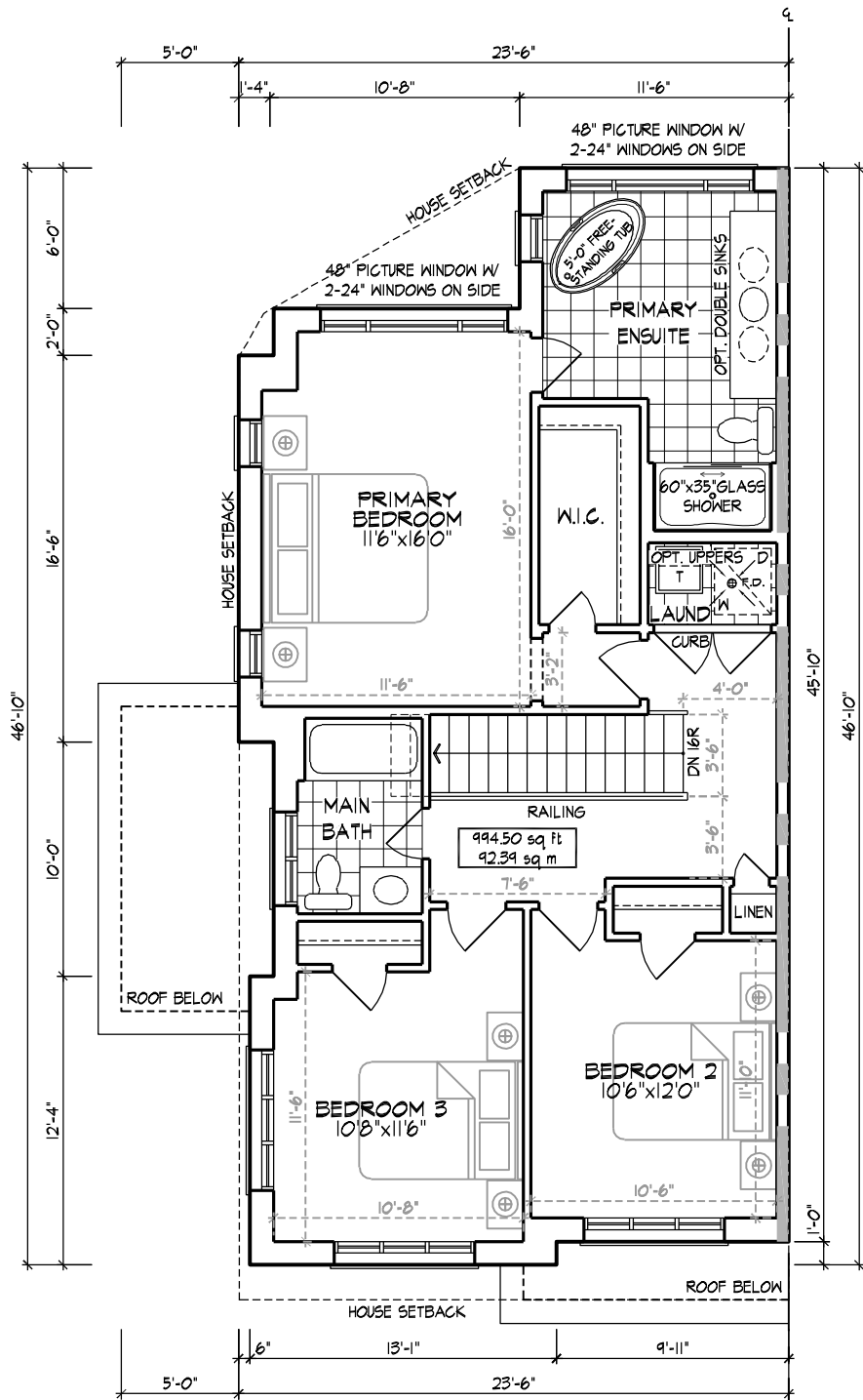
MAR-2024 ■ AA ■ All drawings specifications, related documents and design are the copyright property of Hunt Design Associates (H.D.A.). Reproduction of this property in whole or in part is strictly prohibited without H.D.A.'s written permission.

UNIT 2005 C



FOR 10.2mX26.82m LOTS

ZONING STANDARDS	
MAX. HOUSE WIDTH	23'-6"
MAX. LENGTH GARAGE SIDE	48'-4"
MAX. LENGTH HOUSE SIDE	48'-4"
MAX. COVERAGE W/ PORCH	N/A
MAX. COVERAGE W/O PORCH	N/A
MAX. G.F.A.	N/A
MAX. HEIGHT	11 m
MIN. GARAGE WIDTH	3.5m x 5.2m
MAX. GARAGE WIDTH	N/A
MAX. GARAGE PROJ.	N/A



**CORNER
SECOND FLOOR PLAN, EL. 'A'**
 995 sq ft
 GROSS FLOOR AREA 995 sq ft
 DEDUCT OPEN AREAS 0 sq ft
 NET AREA 995 sq ft



Alliance Homes - 223089
 South Coast Homes, Port Colborne, Ontario
 8966 Woodbine Ave., Markham, ON L3R 0J7 ■ T 905.737.5133 ■ F 905.737.7326 ■ JAN-2024
 TARGET: 1800 SF
 AREA - EL. 'A' 1800 SF
 UNIT 2005 C
 DESIGN ASSOCIATES INC.
 www.huntidesign.ca
 All drawings specifications, related documents and design are the copyright property of Hunt Design Associates (H.D.A.). Reproduction of this property in whole or in part is strictly prohibited without H.D.A.'s written permission.