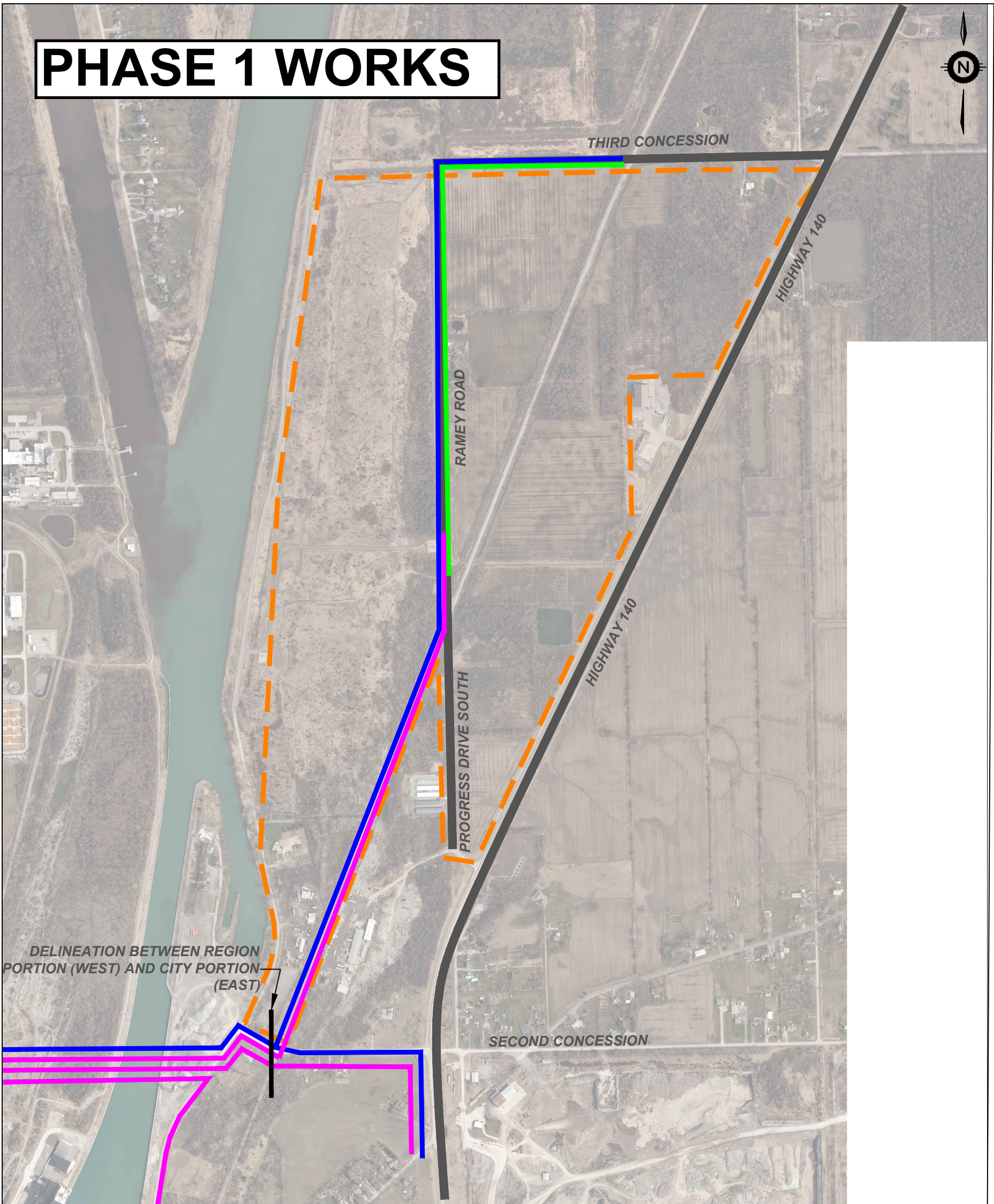


PHASE 1 WORKS



- █ WATERMAIN ALIGNMENT
- █ SANITARY FORCEMAIN ALIGNMENT
- █ SANITARY SEWER ALIGNMENT

PHASE 1 WORKS INCLUDES:

1. WATERMAIN FROM HWY 140 TO 3rd CONCESSION
2. SANITARY FORCEMAIN FROM REGION CONNECTION TO PUMP STATION ON RAMEY ROAD
3. SANITARY SEWER FROM SOUTH LIMIT OF RAMEY ROAD TO 3rd CONCESSION

ALL PHASE 1 WORKS TO BE COMPLETED BETWEEN JANUARY 2025 AND FEBRUARY 2026



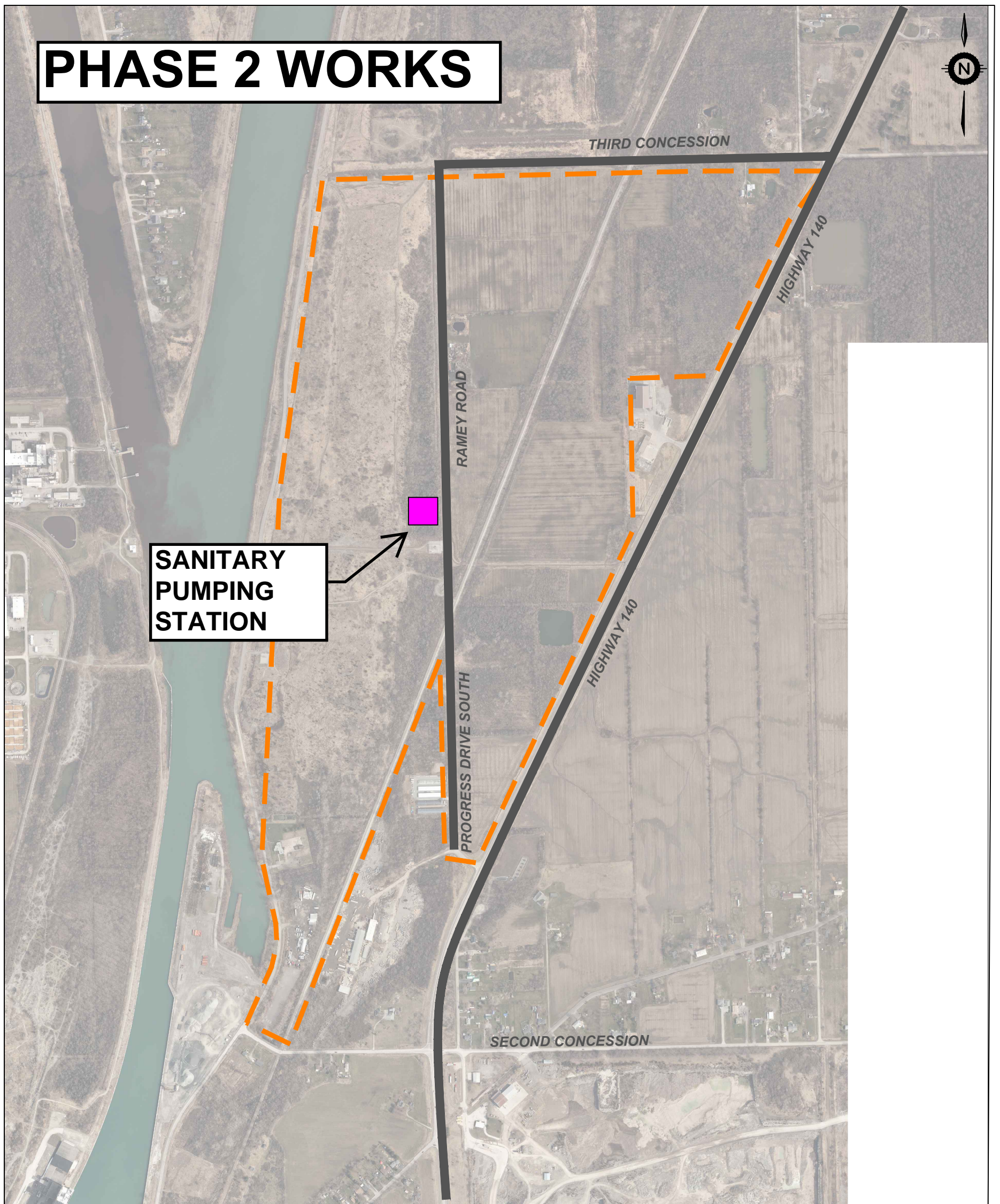
PORT COLBORNE

**THE CITY OF PORT COLBORNE
EAST SIDE EMPLOYMENT LANDS SERVICING**

PHASE 1
CONCEPTUAL PLAN VIEW

DATE	2024-09-23
SCALE	NTS
REF. No.	
DWG No.	D-01

PHASE 2 WORKS



**SANITARY
PUMPING
STATION**

■ SANITARY PUMP STATION

PHASE 2 WORKS INCLUDES:
1. SANITARY PUMP STATION

**SANITARY PUMP STATION TO BE CONSTRUCTED APPROX. BETWEEN
OCTOBER 2026 TO MAY 2027**

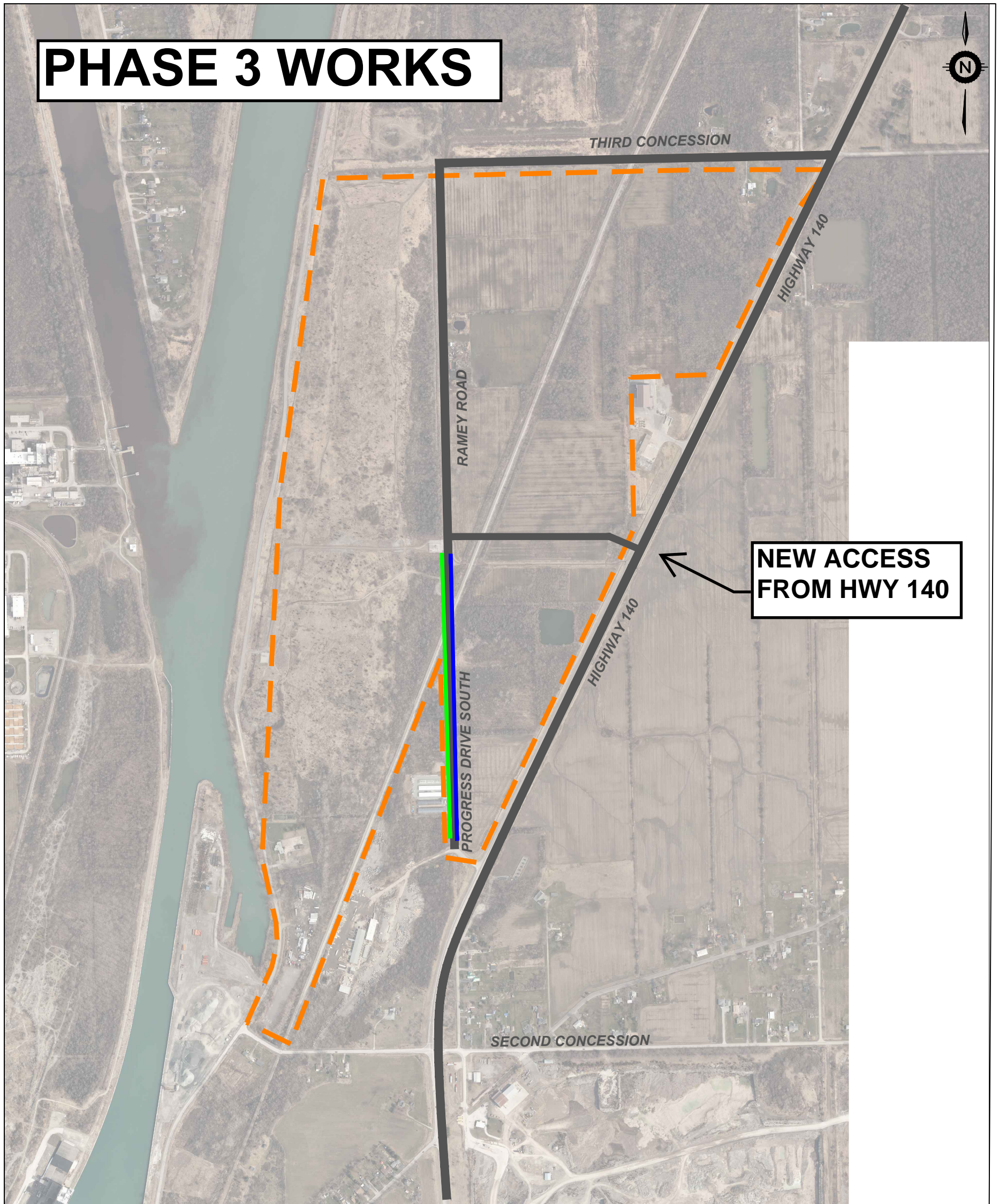


PORT COLBORNE

**THE CITY OF PORT COLBORNE
EAST SIDE EMPLOYMENT LANDS SERVICING**
PHASE 2
CONCEPTUAL PLAN VIEW

DATE	2024-09-23
SCALE	NTS
REF. No.	
DWG No.	D-02

PHASE 3 WORKS



- █ WATERMAIN ALIGNMENT
- █ SANITARY SEWER ALIGNMENT

PHASE 3 WORKS INCLUDES:

1. ROAD IMPROVEMENTS TO RAMEY ROAD (CURB, ASPHALT, LIGHTING, ETC.)
2. CONNECTION OF RAMEY ROAD AND PROGRESS DRIVE SOUTH
3. ROAD IMPROVEMENTS TO PROGRESS DRIVE SOUTH
4. NEW ROAD FROM HWY 140 INTO ESEL
5. ROAD IMPROVEMENTS TO THIRD CONCESSION
6. REMOVAL OF CONNECTION FROM HWY140 TO PROGRESS DRIVE SOUTH
7. MUNICIPAL DRAIN REALIGNMENTS REQUIRED TO FACILITATE ROAD IMPROVEMENTS

ALL PHASE 3 WORKS TO BE COMPLETED BETWEEN MARCH 2026 AND DECEMBER 2027

THE CITY OF PORT COLBORNE
EAST SIDE EMPLOYMENT LANDS SERVICING
 PHASE 3
CONCEPTUAL PLAN VIEW

DATE	2024-09-23
SCALE	NTS
REF. No.	
DWG No.	D-03



PORT COLBORNE