



Partnering for the future of healthcare in South Niagara

December 3, 2024



niagarahealth
Extraordinary Caring. Every Person. Every Time.

Indigenous Land Acknowledgment

As part of our continued commitment to diversity, equity and inclusion, we would like to share our updated organizational Indigenous Land Acknowledgment that was developed in partnership with local Indigenous partners:



Niagara Health is honoured to provide care on lands where Indigenous Peoples have lived for thousands of years with their own unique cultures, identities, traditions and languages. These lands are steeped in the rich history of the First Nations such as the Hatiwendaronk, the Haudenosaunee, the Anishinaabe and the Mississaugas of the Credit First Nation. There are many First Nations, Métis, and Inuit peoples from across Turtle Island who live and work in Niagara today.

We are committed to listening and learning more about the history and current experiences of Indigenous Peoples and acknowledge our responsibility to take meaningful action towards reconciliation in the healthcare system.

Purpose

1. To request support on a unique and innovative partnership between Niagara Health, the City of Port Colborne and Port Colborne primary care physicians, which will work to ensure enhanced primary care services in Port Colborne.
2. To present Niagara Health's request for a local share commitment for the South Niagara Hospital from the City of Port Colborne.



Importance of Primary Care



Niagara has a **shortage of 106 family doctors (primary care)** resulting in **140,000+ unattached patients**



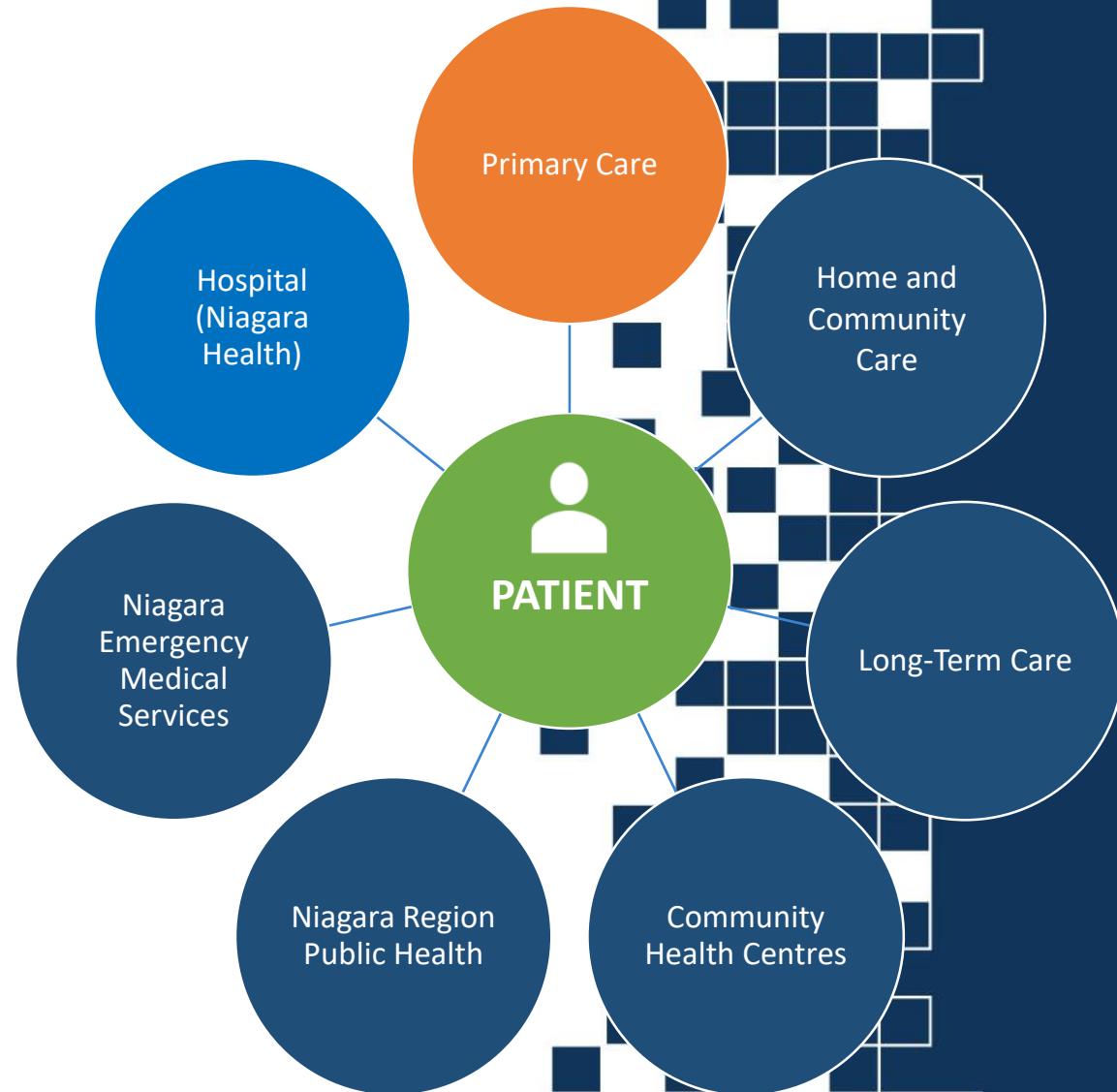
Port Colborne requires **5 additional family doctors** for its population size



The **top five conditions** seen by our UCCs are conditions that should be treated at a **doctor's office** or can now be treated by a **pharmacist** with their expanded scope.



Niagara has the **third-highest older adult** population in Canada. Niagara residents have higher rates of **chronic conditions** than the provincial average



Importance of Primary Care

TYPES OF CARE

Primary Care (family doctor + team)	Urgent Care Centre	Emergency Department
<ul style="list-style-type: none">• Diagnosis and treatment for common illnesses and injuries• Referrals to healthcare specialists• Management of chronic conditions (such as diabetes or high blood pressure)• Prescriptions for medication• Regular check-ups including physicals and routine screening tests (e.g., for cancer)• Home to your full health record	<ul style="list-style-type: none">• Diagnosis and treatment for common illnesses and injuries:• Sprains, strains or sports injuries• Ear, nose, throat and eye problems• Minor cuts that may need stitches• Care is episodic, your full health record is not available	<ul style="list-style-type: none">• Treatment of severe illnesses and life-threatening injuries 24 hours a day, 365 days a year• Urgent medical attention for serious conditions and injuries• Access to a wide range of healthcare specialists and diagnostic equipment

Partnership with Local Primary Care Physicians

A **dedicated team of family physicians serving the local Port Colborne community** is prepared to expand their practice and attract allied health services with the City's full support.

Niagara Health can provide vacant space on the main floor of the west wing of the Port Colborne Site to accommodate their spacing needs, and can make it available for occupancy as soon possible.

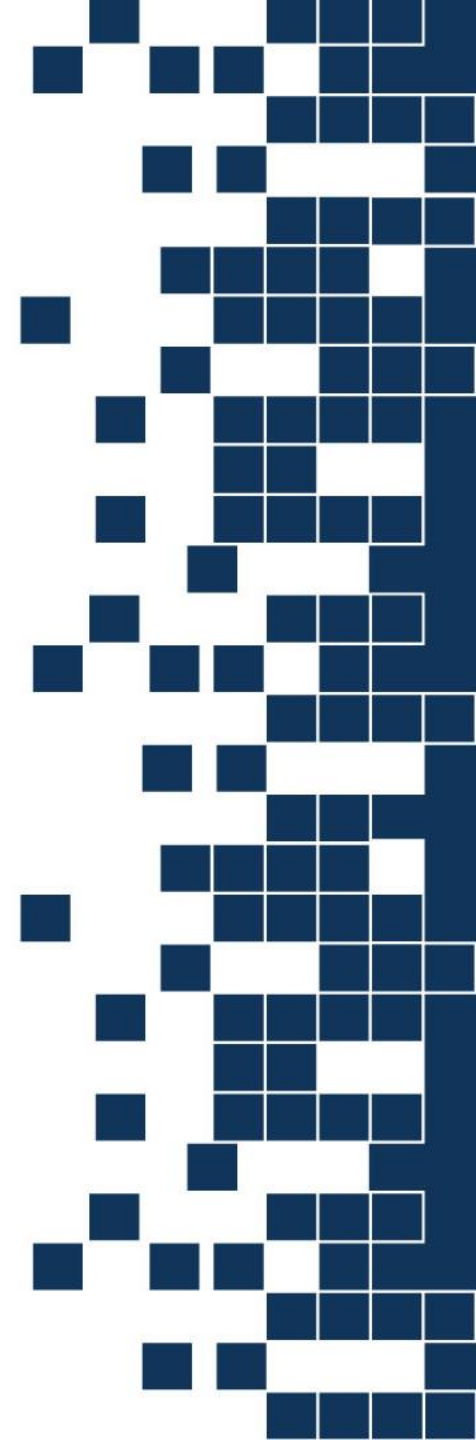


Niagara has a shortage of 106 family doctors (primary care) resulting in 140,000+ unattached patients

Partnership with Primary Care Physician Group

This will help support:

- The retention and recruitment of physicians and allied health professionals to Port Colborne
- Increase access to family physicians for patients in Port Colborne and South Niagara
- Provide more space for the physician group to expand their roster as well as offer after-hours walk-in services for patients with and without family physicians



Future of the Port Colborne Site

In 2028, when the new South Niagara Hospital opens, programs and services will transition to South Niagara and Welland hospitals.

The City of Port Colborne will be offered first rights to purchase the Port Colborne Site for a nominal cost.



Transforming Care: Welland Hospital Redevelopment Update

Relocation of the New Port Residential Addictions Treatment Facility

- The sale and transfer of the Port Colborne Site to the City of Port Colborne is contingent upon approval from the Ministry of Health for a new standalone residential addictions treatment building to be constructed on the Welland Hospital Site to replace the current Port Colborne facility.

Renovations to accommodate additional Continuing Complex Care beds at the Welland Hospital

Future Welland Hospital Redevelopment

- Many opportunities for input and engagement to come.



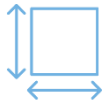
Regional Three-Site Hospital System (2028)

MAROTTA FAMILY HOSPITAL

24/7 Emergency Services
Critical Care
General Surgery
Outpatient Clinics & Surgical Services
Diagnostic Imaging & Laboratory
Children's Health
Kidney Care
Administration

CENTRES OF EXCELLENCE

Women & Babies
Cancer
Cardiac
Mental Health & Addictions



1 million
square feet



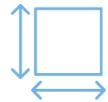
428
Beds

SOUTH NIAGARA HOSPITAL

24/7 Emergency Services
Critical Care
General Surgery
Outpatient Clinics & Surgical Services
Mental Health & Addictions
Diagnostic Imaging & Laboratory
Kidney Care
Joint Care
Indigenous Healing
Administration

CENTRES OF EXCELLENCE

Complex Care
Stroke
Wellness in Aging



1.3 million
square feet



469
Beds

WELLAND HOSPITAL

24/7 Emergency Services with 8-10 Observation Beds
90+ Complex Care Beds
Outpatient Clinics (Orthopedics/Fracture, Plastics, Chronic Disease Management, Geriatric)
Mental Health & Addictions
Diagnostic Imaging & Laboratory (X-ray, Ultrasound, CT, ECG, Echocardiography, Ontario Breast Screening)
Kidney Care
Administration Hub
Long-Term Care

CENTRE OF EXCELLENCE

Eye Care

Proposed programs and services for Welland are based on approved plans for the South Niagara Hospital. Further staff and community engagement is required to submit a proposal to the Ministry of Health for the Welland hospital site redevelopment.



Putting People First



Delivering Safe and Quality Care



Transforming How we Work

Transforming Care: South Niagara Hospital

- **With 469 single patient rooms**, the South Niagara Hospital adds 156 beds to the region.
- **The new state-of-the-art hospital** will help us retain and recruit staff and physicians as well as keep pace with advancements in care and technology.
- **Regional centres of excellence** in Stroke Care, Wellness in Aging, and Complex Care.
- **Full scope of acute care services** - Emergency Department, Intensive Care Unit, outpatient mental health and addiction services, surgery, kidney care, diagnostics and much more.
- **Emergency Department will be 3x the size** of the Emergency Department at the current Niagara Falls hospital.



South Niagara Hospital Local Share Commitment

Hospitals are responsible for:

10%

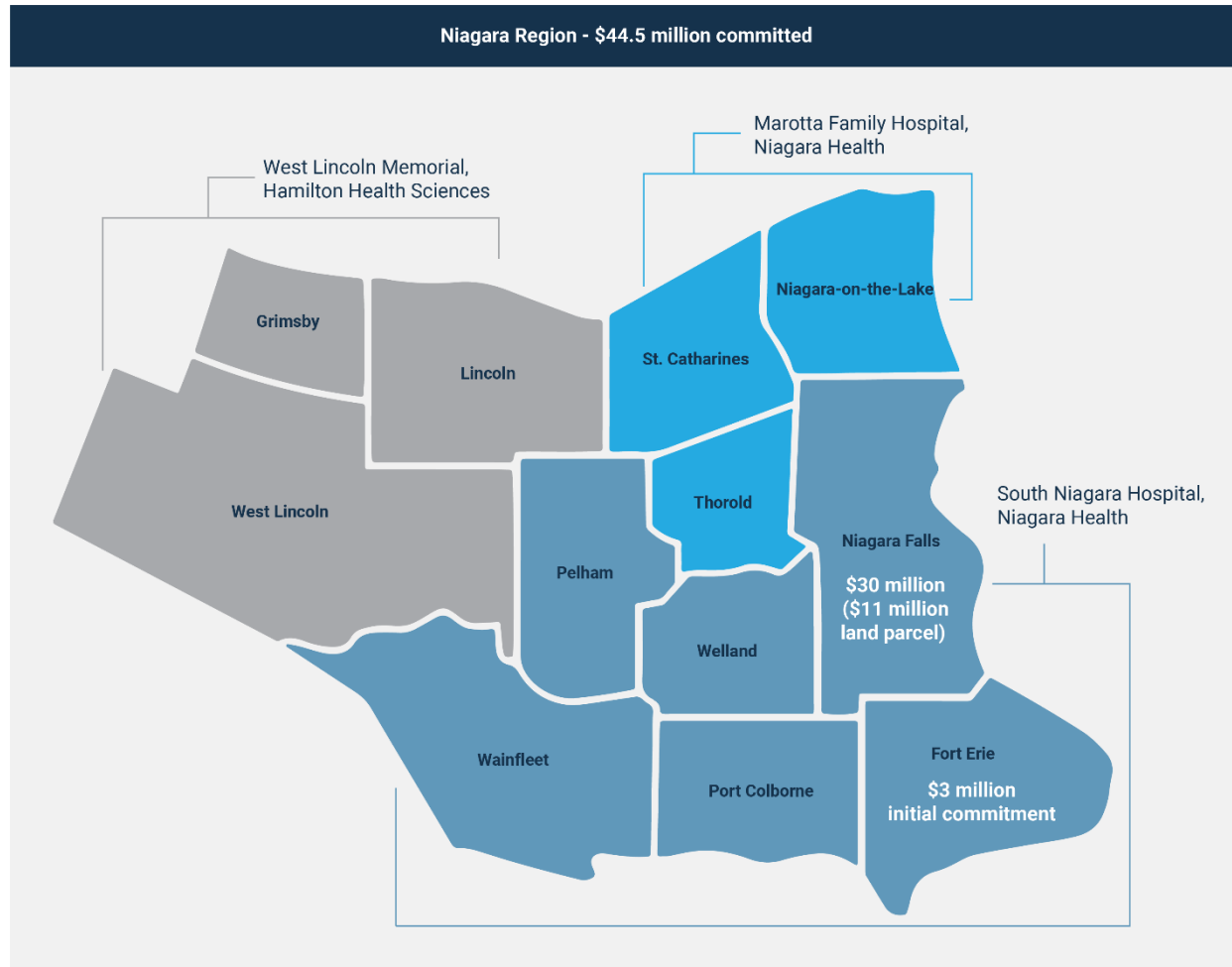
of the eligible construction costs and associated ancillary costs of new hospital builds.

100%

of the costs associated with the purchase of new and replacement furniture, fixtures and equipment.



Municipal Local Share Commitments and Forthcoming Requests



*Pelham, Fort Erie, Welland and Wainfleet Local Share commitments are to be determined.



South Niagara Hospital: Local Share Breakdown



*The cost of financing and Private-Public-Partnership (P3) costs are excluded from the calculation of the local share



Putting People First

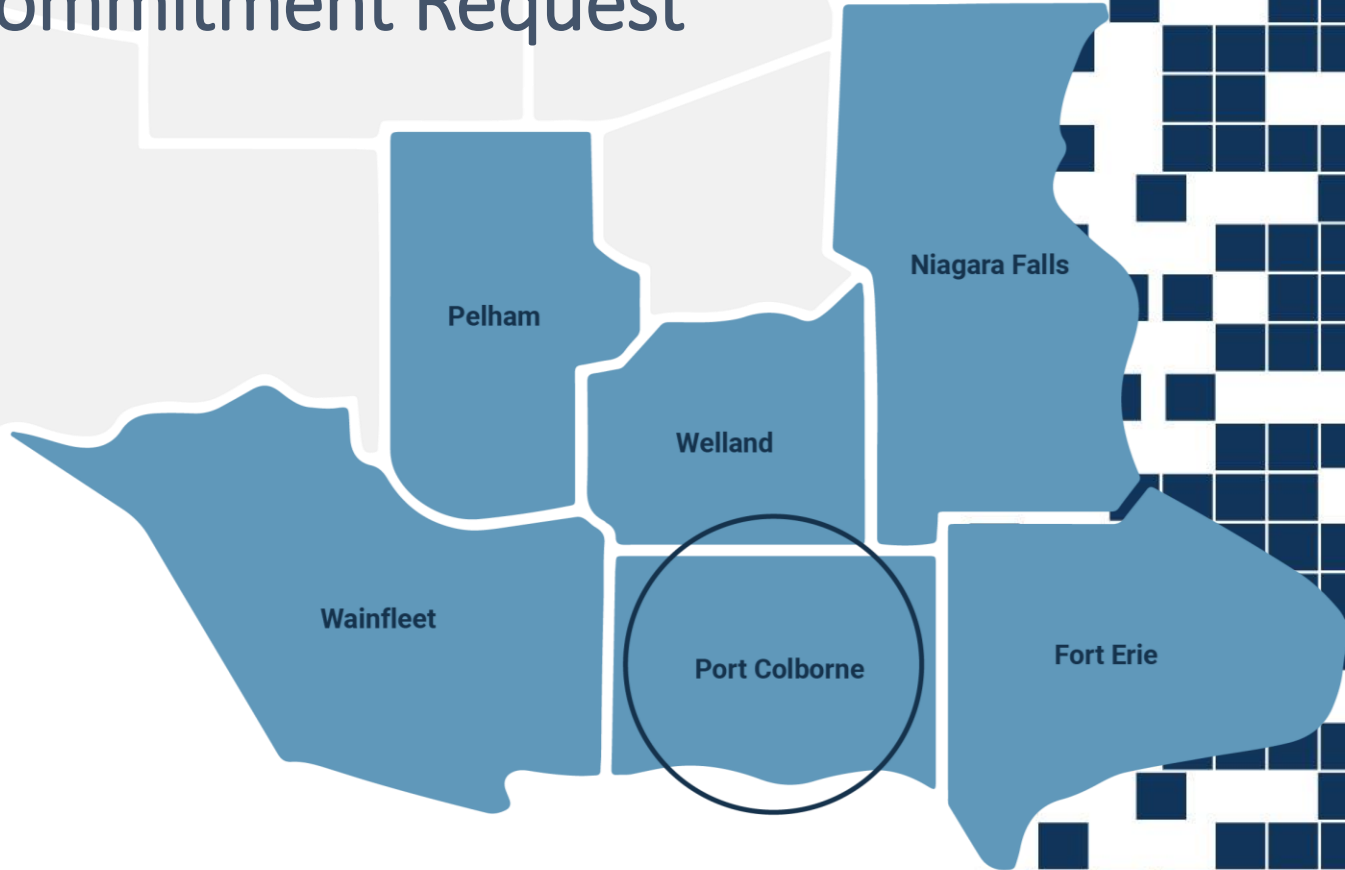


Delivering Safe and Quality Care



Transforming How we Work

Local Share Commitment Request



Request

\$6.2 million

local share contribution for the
South Niagara Hospital

\$340.63

per capita (based on 2016 census)

Summary of Proposed Partnership

- **Cost neutral lease agreement** to enable vacant space in the main floor west wing within the Port Colborne Site to be used by primary care physicians as clinical space - providing a seamless transition of day- and after-hours care to the residents of Port Colborne
- **First rights to purchase the Port Colborne Site** for a nominal cost (\$2) when the programs and services are transferred to the Welland Hospital and when the South Niagara Hospital opens in 2028
- **Support for a South Niagara Hospital local share commitment** of \$6.2 million

YOUR PART

in the future of healthcare

Ensure the Port Colborne Site is used to **benefit the community** once the South Niagara Hospital is opened in 2028.

Transition the Port Colborne Urgent Care Centre (UCC) to an Interprofessional Care Team to ensure a **seamless transition** for the community once the UCC is closed.



Thank you

Questions?



Putting People First



Delivering Safe and Quality Care



Transforming How we Work



niagarahealth

APPENDIX



Putting People First



Delivering Safe and Quality Care



Transforming How we Work

Niagara Health Property Limits

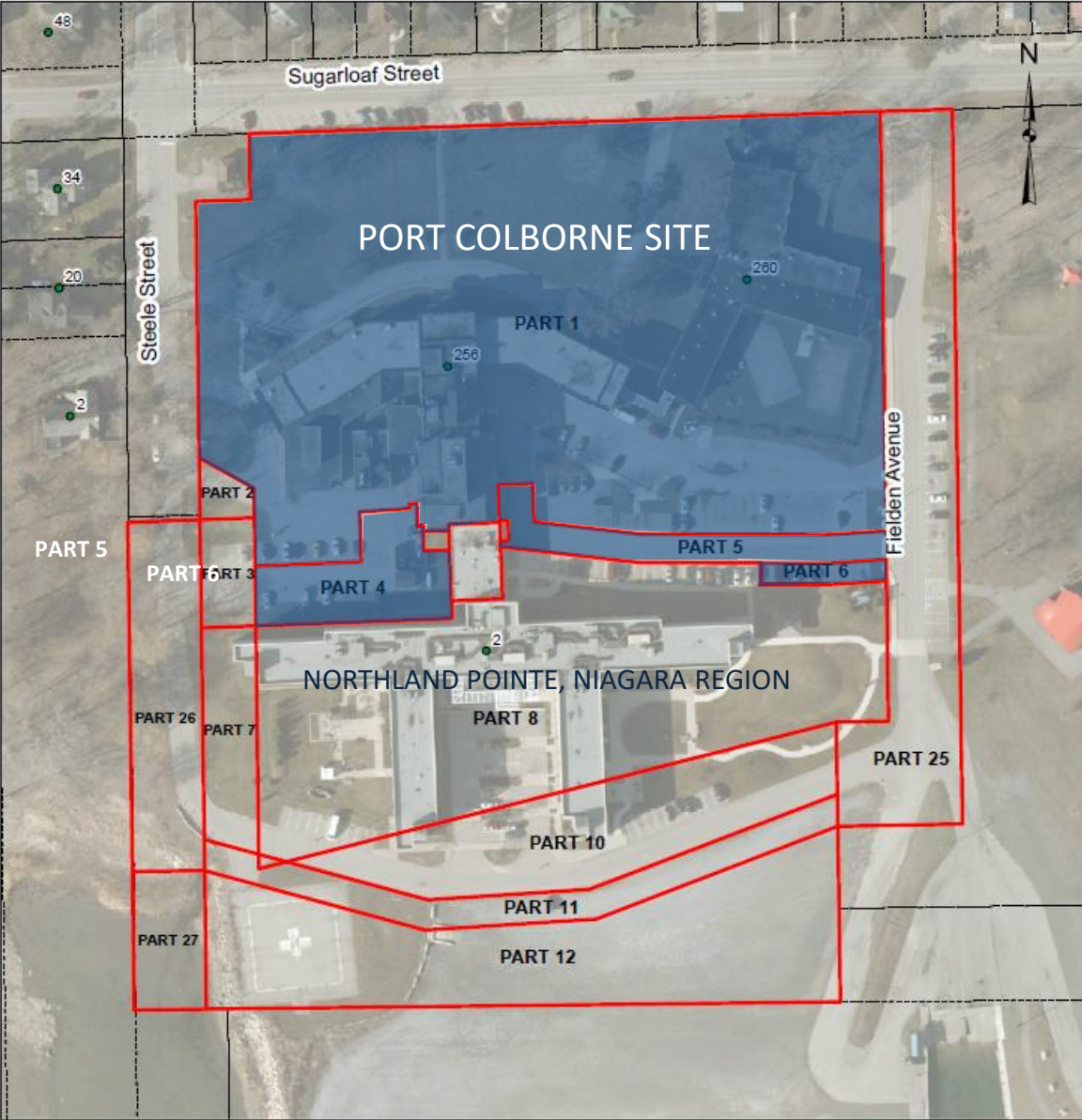


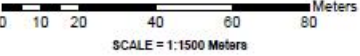


ILLUSTRATION SHOWING APPROXIMATE LIMITS OF THE DRAFT REFERENCE PLAN

LEGEND:

-  - DENOTES TERANET MAPPING
-  - DENOTES APPROXIMATE LIMITS OF THE DRAFT REFERENCE PLAN



DISCLAIMER
 This map was compiled from various sources and is current as of 2014.
 The Region of Niagara makes no representations or warranties whatsoever, either expressed or implied,
 as to the accuracy, completeness, reliability, and currency or otherwise of the information shown on this map.
 © 2014 Niagara Region and its suppliers. Projection is UTM, NAD 83, Zone 17. Airphoto (Spring 2010)

Properties Management
 Surveys & Property Information
 IR-10-48 Date: 2014-04-25