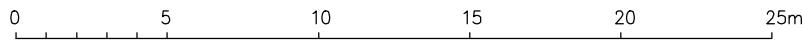


SURVEYOR'S SEAL

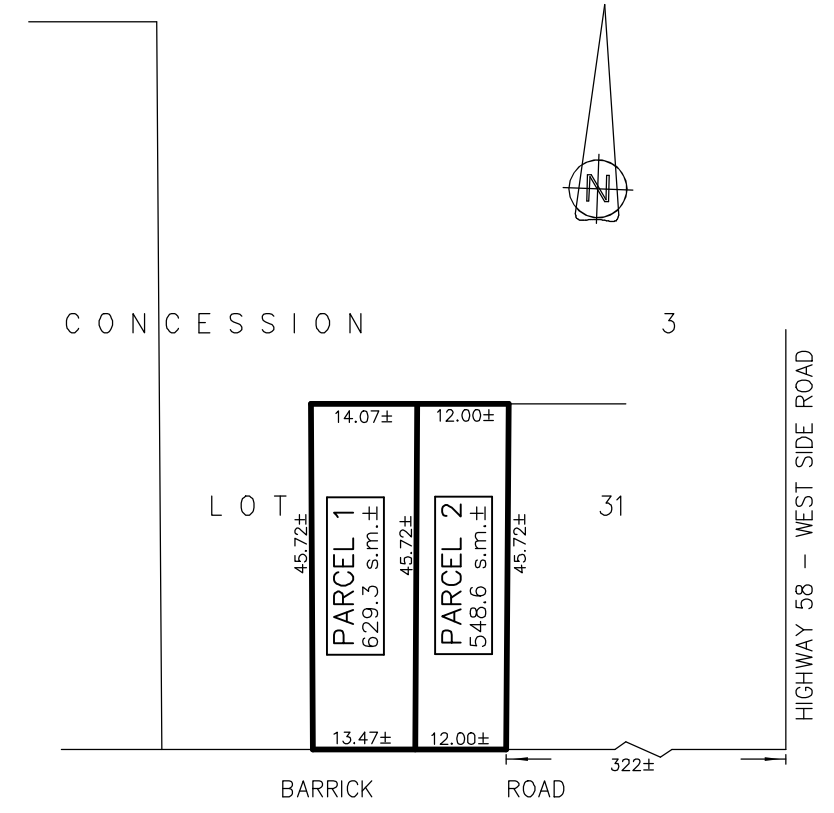
SKETCH

THIS IS AN ORIGINAL COPY IF EMBOSSED BY THE SURVEYOR'S SEAL, OR PDF CERTIFIED

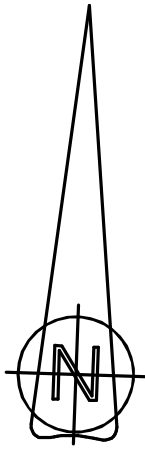
PRELIMINARY SEVERANCE SKETCH OF
607 BARRICK ROAD
CITY OF PORT COLBORNE
REGIONAL MUNICIPALITY OF NIAGARA



SCALE 1 : 250
RASCH & HYDE LTD.
ONTARIO LAND SURVEYORS



KEY PLAN SCALE 1:1000



PIN 64023 - 0390 (LT)
PART 1 PLAN 59R-17017

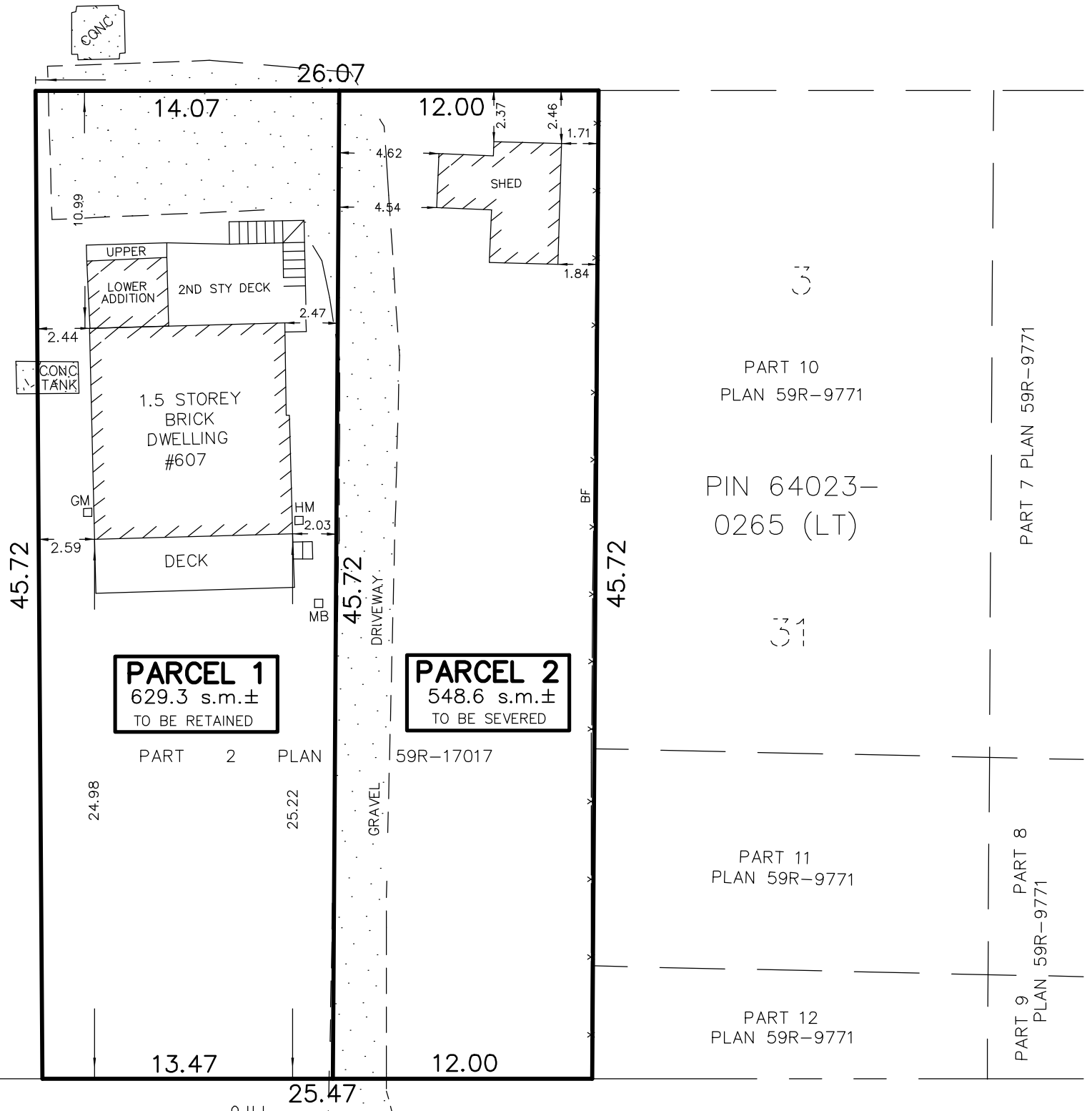
PART 1 PLAN 59R-4004

C O N C E S S I O N

PIN 64023 - 0390 (LT)
PART 1 PLAN 59R-17017

PART 2
PLAN 59R-4004

PART 3
PLAN 59R-4004



PART 10
PLAN 59R-9771

PIN 64023-0265 (LT)

PART 7 PLAN 59R-9771

PART 11
PLAN 59R-9771

PART 12
PLAN 59R-9771

PART 8
PLAN 59R-9771
PART 9
PLAN 59R-9771

PIN 64023 - 0218 (LT)

ROAD ALLOWANCE BETWEEN CONCESSIONS 2 AND 3, HUMBERSTONE
ALSO KNOWN AS BARRICK ROAD (20.12 WIDE)

CAUTION

1. THIS IS NOT A PLAN OF SURVEY AND SHALL NOT BE USED EXCEPT FOR THE PURPOSES INDICATED IN THE TITLE BLOCK.
2. THIS SKETCH IS PROTECTED BY COPYRIGHT ©
3. THIS IS NOT AN ORIGINAL COPY UNLESS EMBOSSED WITH THE SURVEYOR'S SEAL, OR PDF CERTIFIED.
4. ALL DIMENSIONS AND AREAS ARE APPROXIMATE.

PROPERTY DESCRIPTION

PART OF LOT 31, CONCESSION 3,
GEOGRAPHIC TOWNSHIP OF HUMBERSTONE,
CITY OF PORT COLBORNE, REGIONAL MUNICIPALITY OF NIAGARA
PIN 64023-0389 (LT)

BOUNDARY NOTE

BOUNDARIES HAVE BEEN DERIVED PLAN 59R-17017.

LEGEND

BF	DENOTES	BOARD FENCE
GM	DENOTES	GAS METER
HM	DENOTES	HYDRO METER
HP	DENOTES	HYDRO / UTILITY POLE
O U L	DENOTES	OVERHEAD HYDRO / UTILITY POLE LINE
MB	DENOTES	MAILBOX
←	DENOTES	GUY ANCHOR

METRIC NOTE

DISTANCES SHOWN ON THIS PLAN ARE IN METRES AND CAN BE CONVERTED TO FEET BY DIVIDING BY 0.3048

MAY 3, 2023
DATE

Harold D. Hyde
HAROLD D. HYDE
ONTARIO LAND SURVEYOR

© COPYRIGHT, RASCH & HYDE LTD., 2023

RASCH + HYDE LTD.
Ontario Land Surveyors

P.O. Box 6, 1333 Highway #3 East, Unit B
DUNNVILLE, ONT, N1A 2X1
905-774-7188
(FAX 905-774-4000)

P.O. Box 550, 74 Jarvis Street
FORT ERIE, ONT, L2A 5Y1
905-871-9757
(FAX 905-871-9748)

HAROLD D. HYDE O.L.S.

SCALE 1 : 250

SURVEY : 18F002 PS 2

DRWN BY : T. Matheson