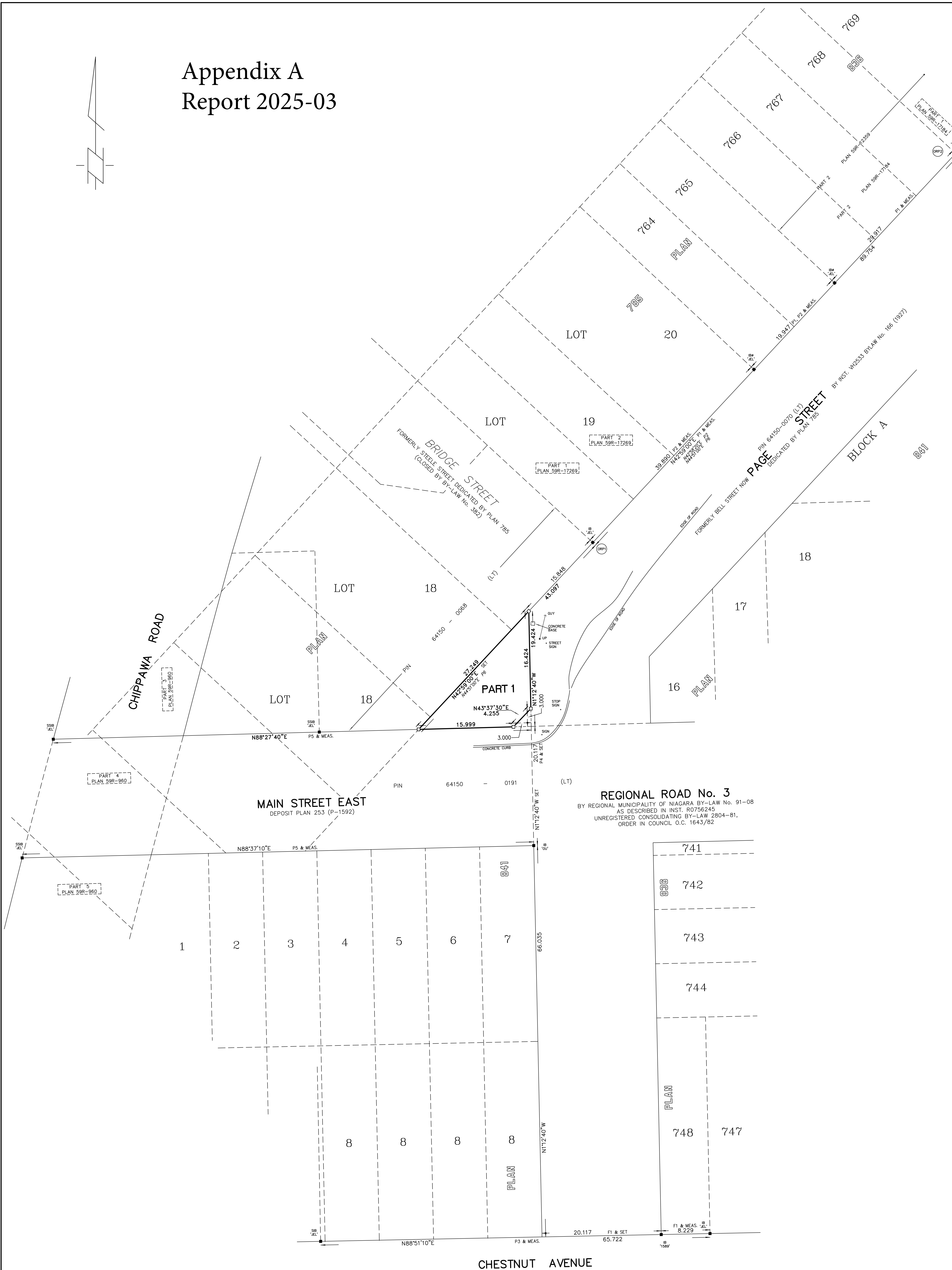
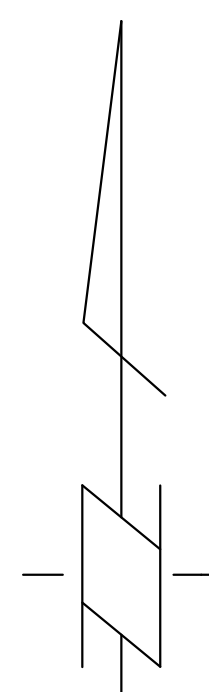


# Appendix A Report 2025-03



I REQUIRE THIS PLAN TO BE DEPOSITED UNDER THE LAND TITLES ACT.

DATE: \* 2024

DRAFT

MARK GILMORE  
ONTARIO LAND SURVEYOR

**PLAN 599-**.....

RECEIVED AND DEPOSITED  
DATE: .....

REPRESENTATIVE FOR LAND REGISTRAR FOR THE LAND TITLES DIVISION OF NIAGARA SOUTH (S9)

---

SCHEDULE

| PART | LOT                                      | PLAN | PIN                         |
|------|--|------|-----------------------------|
| 1    | PART OF PAGE STREET FORMERLY BELL STREET | 785  | PART OF PIN 64150-0070 (LT) |

---

PLAN OF SURVEY OF

**PART OF PAGE STREET FORMERLY BELL STREET  
PLAN 785**

IN THE

**CITY OF PORT COLBORNE  
REGIONAL MUNICIPALITY OF NIAGARA**

---

SCALE 1:250

LANTHIER & GILMORE SURVEYING LTD.  
2024

---

**LEGEND**

|   |  |  |
|---|--|--|
| <ul style="list-style-type: none"> <li>★ DENOTES SURVEY MONUMENT FOUND</li> <li>SIB - STANDARD IRON BAR</li> <li>SSIB - SHORT STANDARD IRON BAR</li> <li>IB - IRON BAR</li> <li>IRB - ROUND IRON BAR</li> <li>IT - IRON TUBE</li> <li>PB - PLASTIC BAR</li> <li>CC - CUT CROSS</li> <li>WT - WITNESS</li> <li>ORP - ORIGIN UNKNOWN OBSERVED REFERENCE POINT</li> <li>MEAS - MEASURED</li> </ul> | <ul style="list-style-type: none"> <li>'JEL' DENOTES LANTHIER &amp; GILMORE SURVEYING LTD. P.S. SUDA, O.L.S.</li> <li>1589 - PLAN 598-17184</li> <li>P1 - PLAN 598-17269</li> <li>P2 - PLAN 598-17096</li> <li>P3 - DEPOSIT PLAN 245 (P-1579)</li> <li>P4 - PLAN 598-960</li> <li>P5 - PLAN 785</li> <li>P6 - 'JEL' FILE 22-160</li> </ul> |  |
|---|--|--|

---

**INTEGRATION DATA**

OBSERVED REFERENCE POINTS (ORP) DERIVED FROM GPS OBSERVATIONS USING THE CAN-NET VRS NETWORK, UTM ZONE 17, NAD 83 (CSRS) (2010).

COORDINATES TO URBAN ACCURACY PER SEC. 14 (2) OF O.REG. 216/10.

| POINT ID | NORTHING     | EASTING    |
|----------|--------------|------------|
| ORP1     | 4,751,420.27 | 643,420.27 |
| ORP2     | 4,751,469.13 | 643,481.45 |

---

**CAUTION**

COORDINATES CANNOT, IN THEMSELVES, BE USED TO RE-ESTABLISH CORNERS OR BOUNDARIES SHOWN ON THIS PLAN.

---

**BEARING NOTE**

BEARINGS ARE UTM GRID, DERIVED FROM SIMULTANEOUS GPS OBSERVATIONS FROM MONUMENTS ORP1 TO ORP2, SHOWN HEREON, HAVING A BEARING OF N42°59'00"E REFERRED TO THE CENTRAL MERIDIAN OF UTM ZONE 17 (81° WEST LONGITUDE) NAD 83 (CSRS) (2010).

FOR BEARING COMPARISONS, A ROTATION OF 2° 03' 30" IN A COUNTER CLOCK-WISE DIRECTION WAS APPLIED TO BEARINGS ON PLAN 598-960.

---

**DISTANCE NOTES**

**METRIC CONVERSION**  
DISTANCES AND COORDINATES SHOWN ON THIS PLAN ARE IN METRES AND CAN BE CONVERTED TO FEET BY DIVIDING BY 0.3048.

**GRID SCALE CONVERSION**  
DISTANCES SHOWN ON THIS PLAN ARE ADJUSTED GROUND LEVEL DISTANCES AND CAN BE USED TO COMPUTE GRID COORDINATES BY MULTIPLYING THE DISTANCES BY A COMBINED SCALE FACTOR OF 0.999832.

---

**SURVEYOR'S CERTIFICATE**

I CERTIFY THAT:

- THIS SURVEY AND PLAN ARE CORRECT AND IN ACCORDANCE WITH THE SURVEYS ACT, THE SURVEYORS ACT AND THE LAND TITLES ACT AND THE REGULATIONS MADE UNDER THEM.
- THE SURVEY WAS COMPLETED ON \*.

DATE: \* 2024

DRAFT

MARK GILMORE  
ONTARIO LAND SURVEYOR

---

THIS PLAN OF SURVEY RELATES TO AOLS PLAN SUBMISSION FORM NUMBER V-71767

LANTHIER & GILMORE SURVEYING LTD.  
173 CLARENCE ST. PORT COLBORNE, ONT. (905) 835-5417

---

|              |                          |                  |        |
|--------------|--------------------------|------------------|--------|
| SCALE: 1:250 | DR. BY: CM<br>CH. BY: MG | JEL FILE: 22-959 | F-1471 |
|--------------|--------------------------|------------------|--------|