

1ST FLOOR PLATE

1" = 10'-0"

MELLANBY AVE.

* DISCLAIMER: ISSUED FOR PRELIMINARY DESIGN DISCUSSION ONLY

NORTH PORT ISLAND HEIGHTS

48, 56 & 56 1/2 MAIN STREET W. & 179 MELLANBY AVE, PORT COLBORNE, ON L3K 2L6

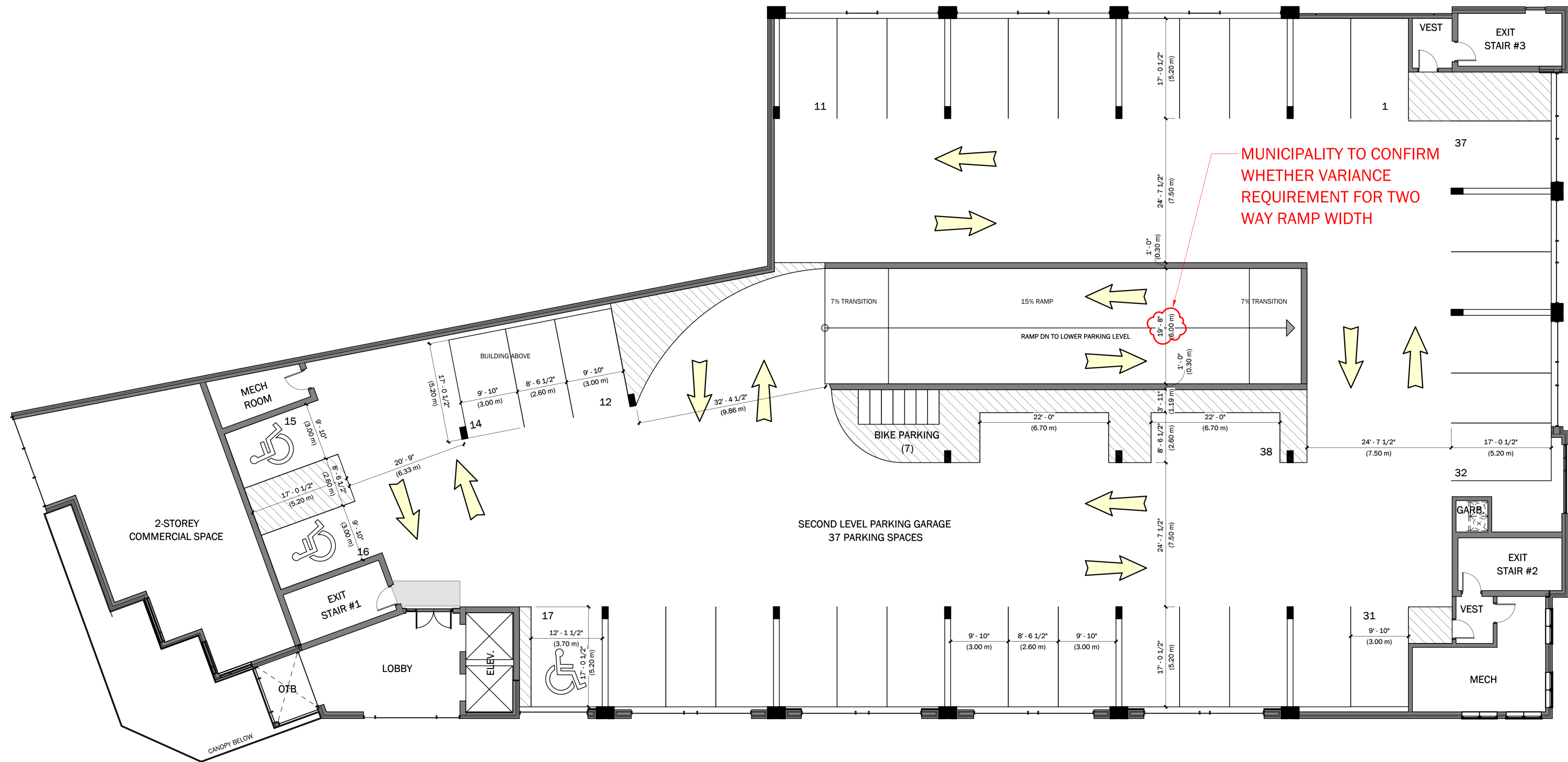
A · C · K
architects
STUDIO INC.

1ST FLOOR PLATE

DWG. No.

A1

SCALE: AS SHOWN
DATE: MARCH 2023
PROJECT No.: 2023-144



2ND FLOOR PLATE
 1" = 10'-0"
 16,622 S.F +/-

* DISCLAIMER: ISSUED FOR PRELIMINARY DESIGN DISCUSSION ONLY

NORTH PORT ISLAND HEIGHTS

48, 56 & 56 1/2 MAIN STREET W. & 179 MELLANBY AVE, PORT COLBORNE,
 ON L3K 2L6

A · C · K
 architects
 STUDIO INC.

2ND FLOOR PLATE

DWG. No.

A2

SCALE: AS SHOWN
 DATE: MARCH 2023
 PROJECT No.: 2023-144