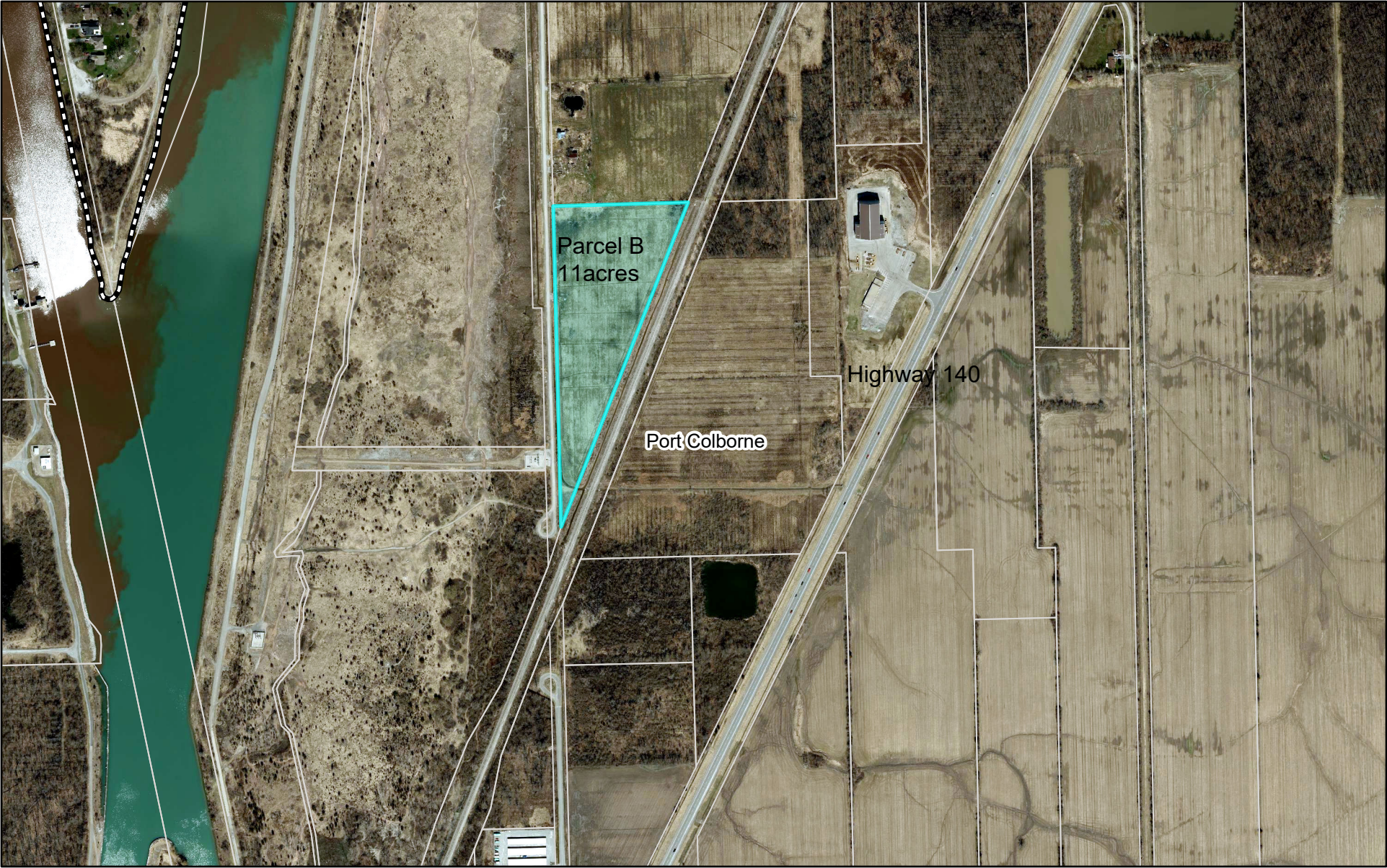
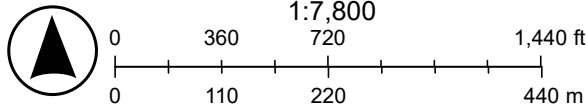


Port Colborne Mapping Application



2025-03-06, 4:03:53 p.m.

 Port Colborne Boundary	 Green: Green	 Green: Green
 Assessment Parcel - Assessment Parcels	 Blue: Blue	 Blue: Blue
 Red: Red	 Red: Red	 World Hillshade



Esri, NASA, NGA, USGS, FEMA, Sources: Esri, TomTom, Garmin, FAO, NOAA, USGS, © OpenStreetMap contributors, and the GIS User Community