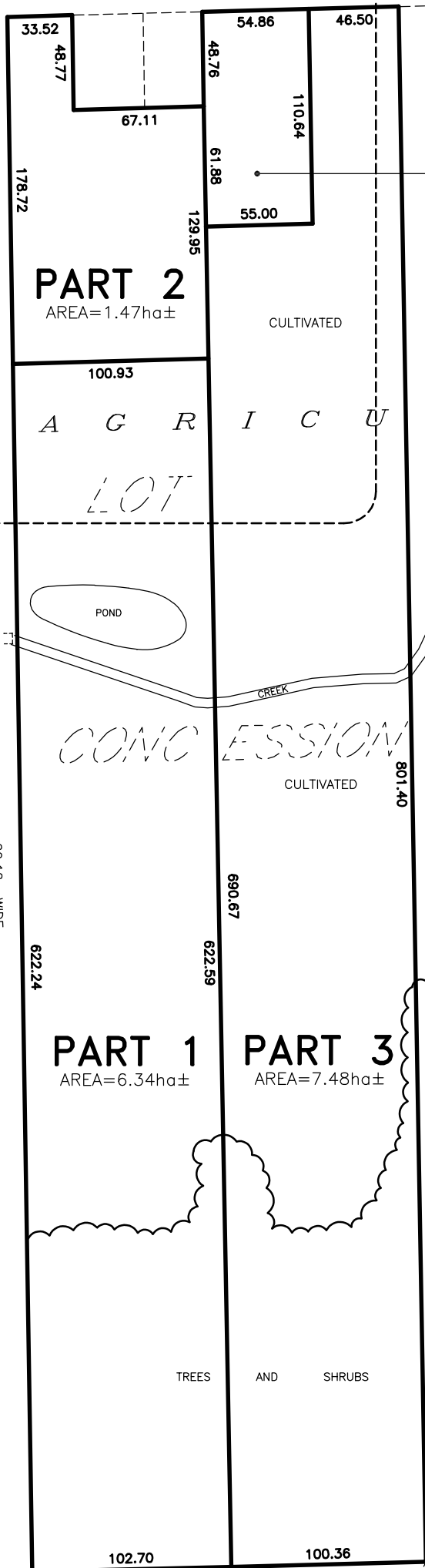


SEE SHEET 2

FORKS ROAD ALLOWANCE BETWEEN CONCESSIONS 4 AND 5 ROAD

20.12 WIDE



SNIDER

ROAD ALLOWANCE BETWEEN LOTS 22 AND 23

ROAD

20.12 WIDE

622.24

178.72

67.11

**PART 2**  
AREA=1.47ha±

100.93

A G R I C U L T U R A L

LOT

POND

CREEK

CONCESSION

CULTIVATED

FIELD

801.40

690.67

622.59

**PART 1**  
AREA=6.34ha±

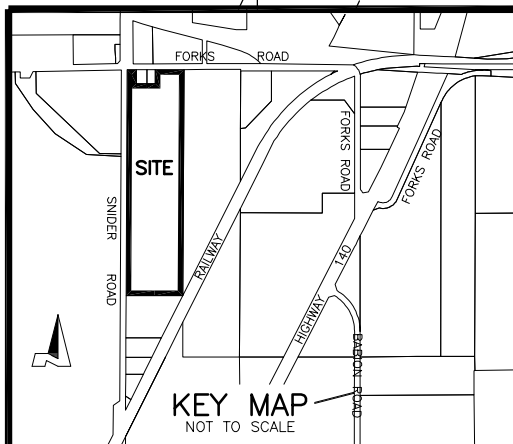
**PART 3**  
AREA=7.48ha±

TREES AND SHRUBS

102.70

100.36

**PART 4**  
AREA=0.61ha±



**SKETCH**

PREPARED FOR CONSENT APPLICATION

PART OF LOT 22  
CONCESSION 4  
GEOGRAPHIC TOWNSHIP OF HUMBERSTONE  
IN THE  
**CITY OF PORT COLBORNE**  
REGIONAL MUNICIPALITY OF NIAGARA  
SCALE 1 : 3000 (METRIC)

NOTE: THIS SKETCH IS PREPARED FROM COMPILED AND CALCULATED INFORMATION, NOT FROM AN ACTUAL SURVEY.  
DO NOT SCALE FROM THIS DRAWING.  
ALL MEASUREMENTS ARE +/- MEASUREMENTS.

"THIS IS NOT AN ORIGINAL COPY UNLESS EMBOSSED WITH SEAL"

CAUTION: THIS IS NOT A PLAN OF SURVEY AND SHALL NOT BE USED EXCEPT FOR THE PURPOSE INDICATED IN THE TITLE BLOCK.

© COPYRIGHT 2025

THE REPRODUCTION, ALTERATION OR USE OF THIS SKETCH, IN WHOLE OR IN PART WITHOUT THE EXPRESS WRITTEN PERMISSION OF CHAMBERS AND ASSOCIATES SURVEYING LTD. IS STRICTLY PROHIBITED.

NOV. 13, 2025 *Don Chambers*  
DATE DONALD G. CHAMBERS, B. Sc., O.L.S.

**CHAMBERS AND ASSOCIATES SURVEYING LTD**

12 THOROLD ROAD EAST (905) 735-7841 / 735-7844  
WELLAND ONTARIO FAX (905) 735-7333  
L3C 3T2 www.casl-surveying.com

DWG 25048\_SEV FILE 25-48

NOTE

- 1) Part 1 to be severed from Part 2.
- 2) Part 3 to be severed from Part 4.
- 3) Parts 1 and 3 to merge in title.