

BEARING NOTE
BEARINGS ARE UTM GRID, DERIVED FROM OBSERVED REFERENCE POINTS A AND B BY REAL TIME NETWORK (RTN) OBSERVATIONS, UTM ZONE 17, NAD83 (CSRS) (2010)

DISTANCE NOTE
DISTANCES ARE GROUND AND CAN BE CONVERTED TO GRID BY MULTIPLYING BY THE COMBINED SCALE FACTOR OF 0.99983.

OBSERVED REFERENCE POINTS (ORPs): UTM ZONE 17, NAD 83 (CSRS) (2010). CO-ORDINATES TO URBAN ACCURACY PER SEC. 14 (2) OF O.REG. 216/10

POINT ID	NORTHING	EASTING
ORP A	4748951.02	643331.02
ORP B	4748870.85	643282.22

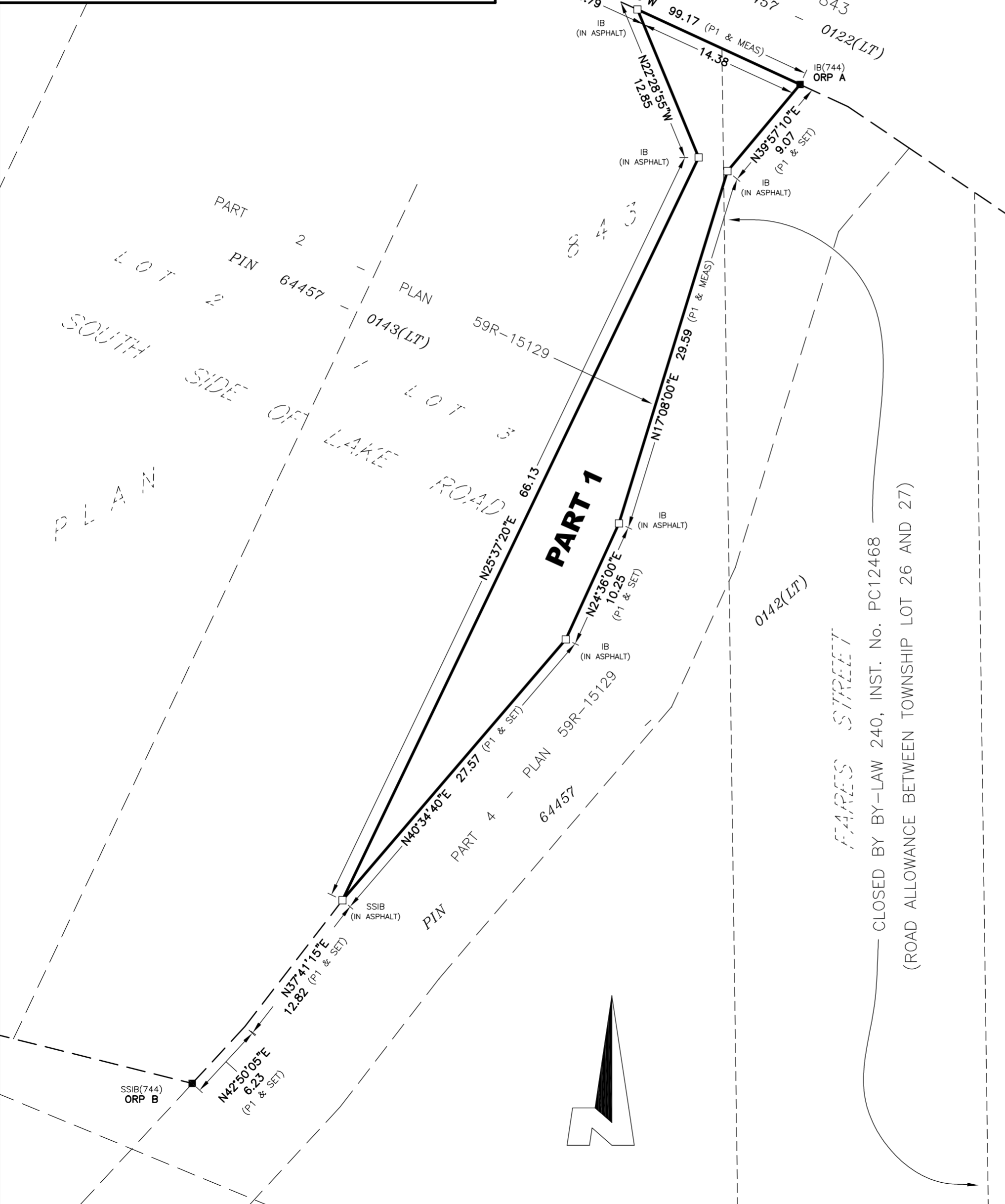
CO-ORDINATES CANNOT, IN THEMSELVES, BE USED TO RE-ESTABLISH CORNERS OR BOUNDARIES SHOWN ON THIS PLAN.

SCHEDULE			
PART	LOT	PLAN	PIN
1	PART OF LOT 3 - (SOUTH SIDE OF LAKE ROAD)	PLAN 843	PART OF PIN 64457-0143(LT)
	PART OF THE ROAD ALLOWANCE BETWEEN LOTS 26 & 27 HUMBERSTONE	--	

PLAN 59R-18550

Received and deposited
March 12th, 2026
Silva Pranter

Representative for the
Land Registrar for the
Land Titles Division of
Niagara South (No.59)



PLAN OF SURVEY OF
PART OF LOT 3 - (SOUTH SIDE OF LAKE ROAD) - PLAN 843

PART OF THE ROAD ALLOWANCE BETWEEN LOTS 26 & 27 (KNOWN AS FARES ST.) (CLOSED BY BY-LAW 240, INSTR. PC12468)

GEOGRAPHIC TOWNSHIP OF HUMBERSTONE

CITY OF PORT COLBORNE
REGIONAL MUNICIPALITY OF NIAGARA

SCALE 1 : 300

DONALD G. CHAMBERS
ONTARIO LAND SURVEYOR

THE INTENDED PLOT SIZE OF THIS PLAN IS 430mm IN WIDTH BY 424mm IN HEIGHT WHEN PLOTTED AT A SCALE OF 1:300

LEGEND

—■—	DENOTES	SURVEY MONUMENT FOUND
—□—	"	SURVEY MONUMENT SET
SIB	"	STANDARD IRON BAR
SSIB	"	SHORT STANDARD IRON BAR
IB	"	IRON BAR
CP	"	CONCRETE PIN
RIB	"	ROUND IRON BAR
IP	"	IRON PIPE
MEAS	"	MEASURED
WIT	"	WITNESS
OU	"	ORIGIN UNKNOWN
N/S/E/W	"	NORTH/SOUTH/EAST/WEST
PIN	"	PROPERTY IDENTIFICATION NUMBER
P1	"	DEPOSITED PLAN 59R-15129
799	"	R. H. FUNK, O.L.S.
744	"	R. J. MATTHEWS, O.L.S.

METRIC NOTE
DISTANCES AND COORDINATES SHOWN ON THIS PLAN ARE IN METRES AND CAN BE CONVERTED TO FEET BY DIVIDING BY 0.3048.

SURVEYOR'S CERTIFICATE

I CERTIFY THAT:

- THIS SURVEY AND PLAN ARE CORRECT AND IN ACCORDANCE WITH THE SURVEYS ACT, THE SURVEYORS ACT AND THE LAND TITLES ACT AND THE REGULATIONS MADE UNDER THEM;
- THE SURVEY WAS COMPLETED ON THE 8th DAY OF FEBRUARY, 2026.

FEB. 20, 2026
DATE

Donald G. Chambers
DONALD G. CHAMBERS, B. Sc., O.L.S.

THIS PLAN OF SURVEY RELATES TO A.O.L.S. PLAN SUBMISSION FORM V-125658

CHAMBERS AND ASSOCIATES
SURVEYING LTD

12 THOROLD ROAD EAST
WELLAND ONTARIO
L3C 3T2

(905) 735-7841
(905) 735-7844
www.casl-surveying.com

DRAWN BY: A.M.L.	MSCAD: 20040-1_MS	DWG: 20040-1_RP	FILE No: 20-40-1
---------------------	----------------------	--------------------	---------------------