

# Official Plan Update

City of Port Colborne Council

February 22, 2022

# new niagara official plan

---



## **OUR NATURAL ENVIRONMENT SYSTEM**

Improved mapping of the Region's natural heritage features and water resources



## **OUR RESPONSE TO CLIMATE CHANGE**

Prioritize climate change throughout the plan to achieve sustainable and resilient communities.



## **OUR HOUSING MIX**

Support a diverse range of dwelling types to addresses affordability and market demand.



## **OUR ECONOMIC COMPETITIVENESS**

Identified areas that are protected for long-term investment in employment uses.



## **OUR PLANNING FRAMEWORK**

Clearer policies for local implementation and coordination with Regional planning.

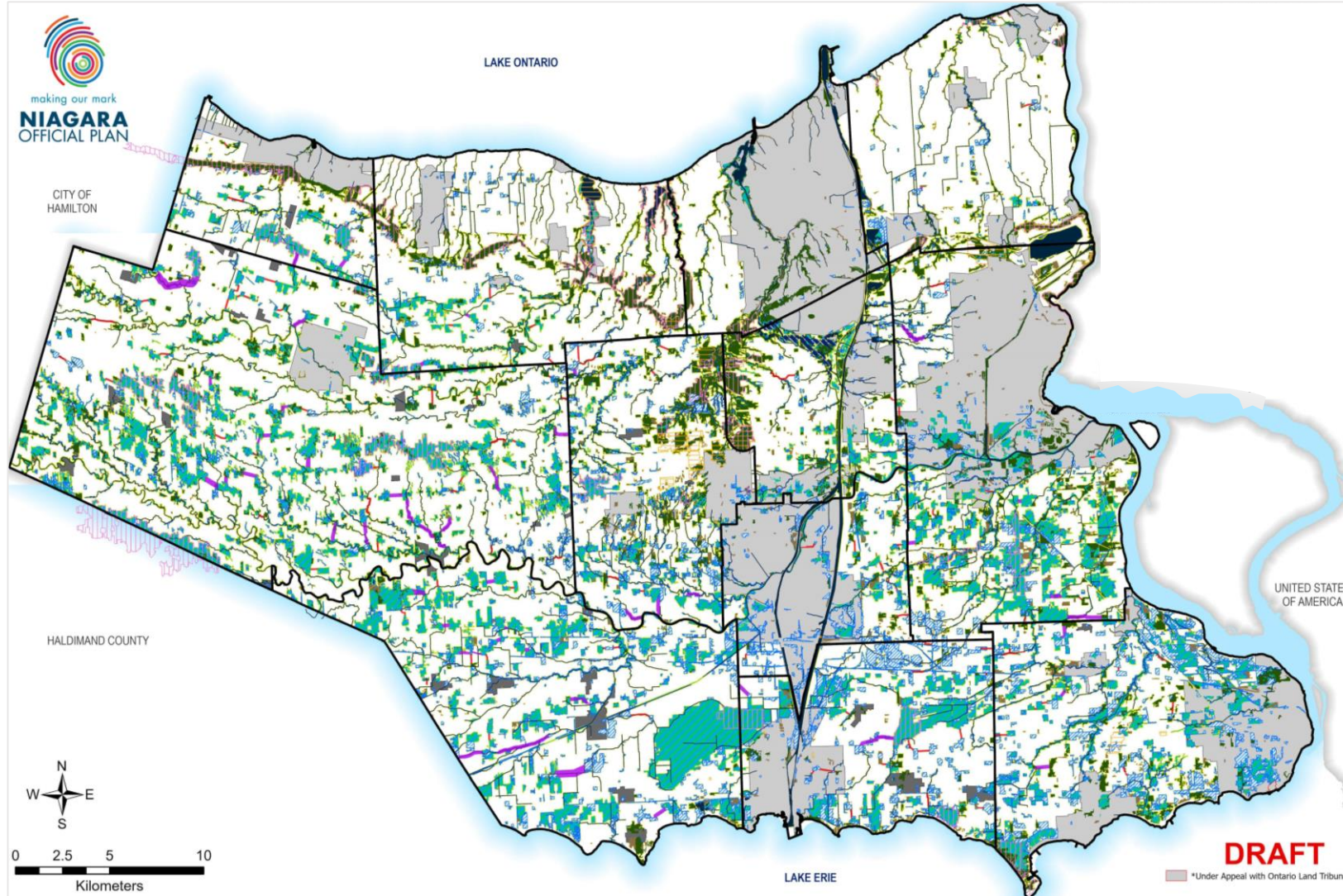
# niagara 2051 review







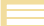







# official plan purpose



# natural environment system



## LEGEND

-  Settlement Area
-  Medium and Large Linkages
-  Small Linkages
-  Life Science ANSI
-  Earth Science ANSI
-  Significant Woodlands
-  Other Woodlands
-  Other Wetlands and Non Provincially Significant Wetlands
-  Provincially Significant Wetlands
-  Waterbodies
-  Inland Lakes
-  Mapped Vegetation Protection Zones/Buffers

# how we grow

**694k**

total number of  
people in Niagara  
by 2051

**272k**

total number of  
jobs in Niagara  
by 2051

**60%**

target for  
intensification  
growth by 2051

**50**

density target for  
Designated  
Greenfield Areas

# growth forecast and intensification targets

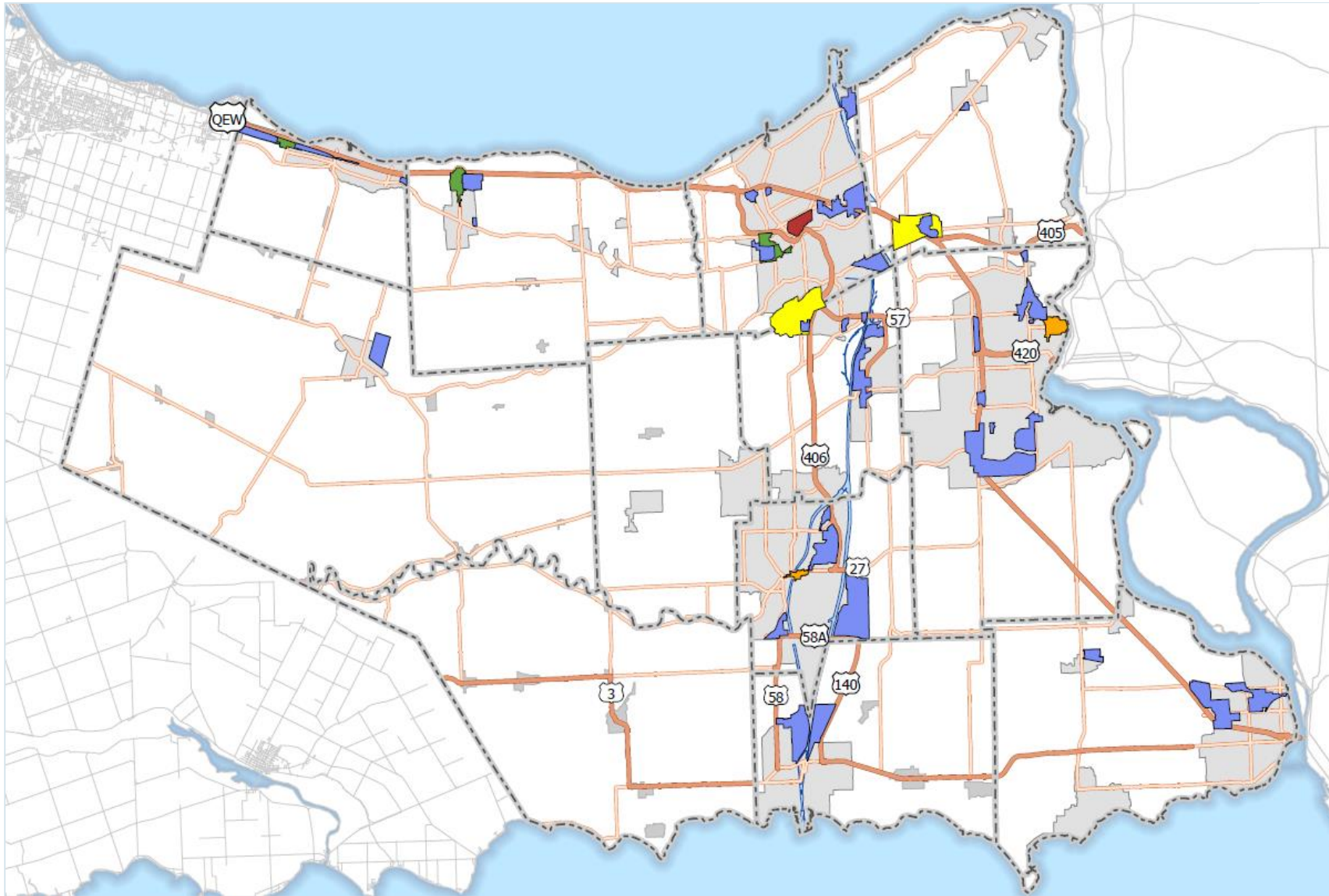
Population and Employment Forecasts by Local Municipality

Municipality	Population	Employment
Fort Erie	48,050	18,430
Grimsby	37,000	14,960
Lincoln	45,660	15,220
Niagara Falls	141,650	58,110
Niagara-on-the-Lake	28,900	17,610
Pelham	28,830	7,140
Port Colborne	23,230	7,550
St. Catharines	171,890	79,350
Thorold	39,690	12,510
Wainfleet	7,730	1,830
Welland	83,000	28,790
West Lincoln	38,370	10,480
<b>Niagara Region</b>	<b>694,000</b>	<b>272,000</b>

Niagara Region Intensification Targets by Local Municipality

Municipality	Units	Rate
Fort Erie	3,680	50%
Grimsby	4,500	98%
Lincoln	8,895	90%
Niagara Falls	10,100	50%
Niagara-on-the-Lake	1,150	25%
Pelham	1,030	25%
Port Colborne	690	30%
St. Catharines	18,780	95%
Thorold	1,610	25%
Wainfleet	0	0%
Welland	10,440	75%
West Lincoln	1,130	13%
<b>Niagara Region</b>	<b>62,005</b>	<b>60%</b>

where we grow

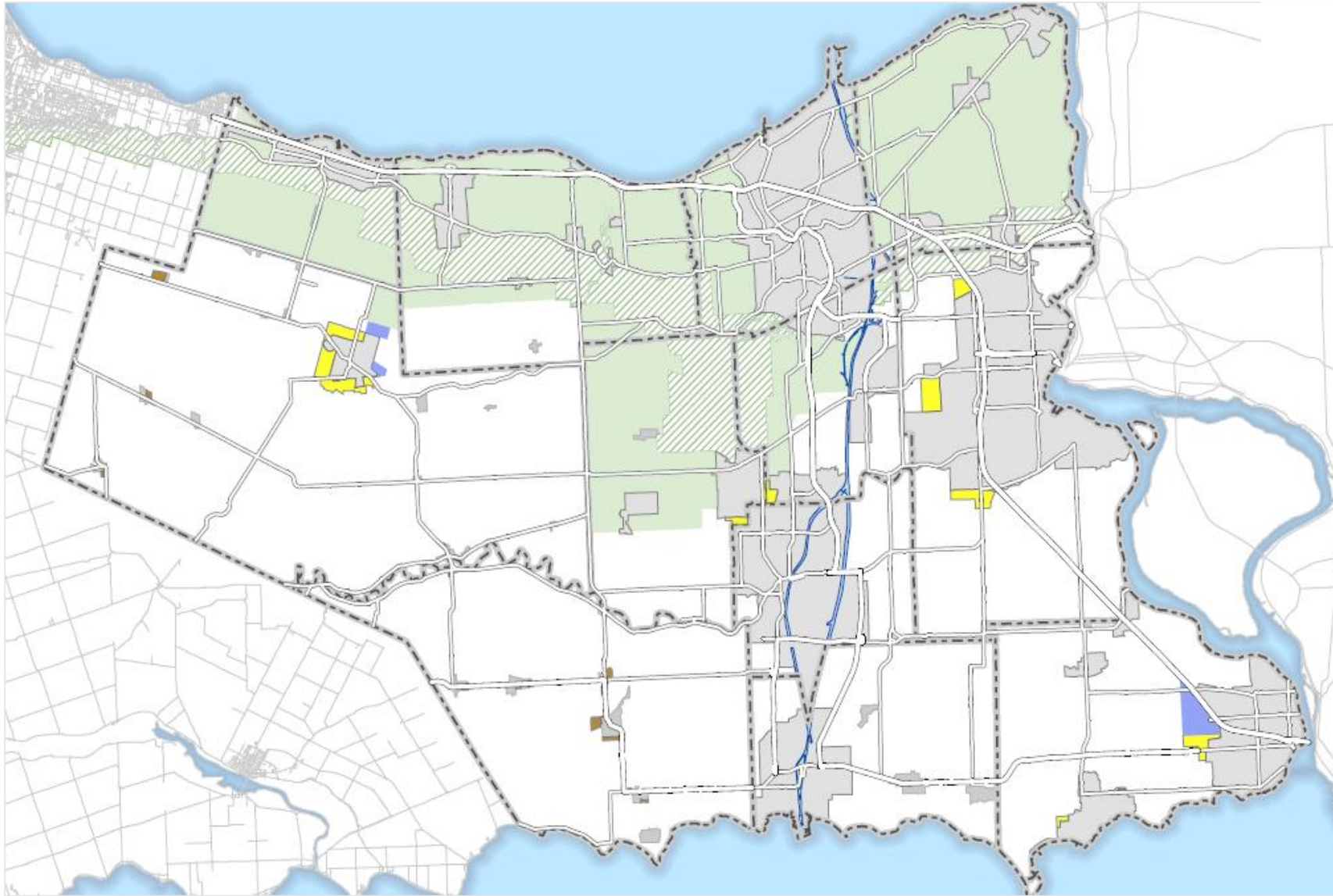


## LEGEND

- Urban Area
  - Employment Area
  - Rural Settlement Area
  - Rural Area
- Strategic Growth Areas
- Urban Growth Centre
  - District Plan Area
  - Major Transit Station Area
  - Regional Growth Centre




# expansion recommendations



## LEGEND

- Settlement Area
- Greenbelt Plan
- Niagara Escarpment Plan
- Rural Area
- Community Area Expansion
- Employment Area Expansion
- Rural Settlement Expansion Area



# the systems that provide for them

---



## District and Secondary Plans

Neighbourhood level plans that envision the types of land uses to be developed within a specified area and the improvements needed to realize that vision.



## Urban Design

Policies and/or guidelines that outline the scale, materials, and standards used for a community's built form, streetscape, and public realm.



## Infrastructure Policies

Policies that identify how infrastructure improvements, including transportation and water/wastewater systems and services, will support where and how we grow.



## Niagara 2051 Coordination

The new Niagara Official Plan will coordinate with other key infrastructure plans to comprehensively plan for growth.

# climate change

---

Draft policies for new **climate change commitments**:

- Maintain a greenhouse gas inventory
- Establish greenhouse gas reduction targets to work toward the long-term goal of net-zero emissions
- Develop a Regional Greening Initiative to restore and enhance vegetative cover
- Maintain regional climate modeling and projections to inform climate change adaptation initiatives
- Consider climate projections in land use policies, strategies and guidance
- Assess climate change risks and vulnerabilities, and develop a climate change adaptation strategy



# climate change policies throughout plan

Policy direction across the Plan supports the transition to **net-zero, climate-resilient communities**.

- Prioritize investments in public transit and active transportation infrastructure.
- Promote the design of compact, mixed-use communities that use land wisely.
- Encourage development in existing urban areas and strategic growth areas.
- Integrate low impact development and green infrastructure into new development.
- Enhance natural features that help to store greenhouse gas emissions.



# outcomes



Affordable housing opportunities.



Climate change adaptation and mitigation.



Efficient use of infrastructure.



Investments in public amenities.



Protection of natural and rural systems.



Support for economic development.

# official plan timeline

**NOVEMBER and  
DECEMBER 2021**

- Employment Conversions
- SABR
- Natural Environment

**JANUARY and  
FEBRUARY 2022**

- Consolidated Official Plan release
- Consultation sessions and open house
- SABR Comment Deadline

**MARCH and  
APRIL 2022**

- Statutory Public Meeting
- Assess comments received

**JUNE  
2022**

- Recommendation report to Council

**JULY  
2022**

- Deadline for Provincial approval

# consultation dates

---

**February 24**

**Time:** 6:30 – 8:30PM

Virtual Open House:  
Draft Consolidated Official  
Plan.

**March 4**

Consultation Period Closes

**Spring**

Statutory Consultations

# moving forward



Area municipal engagement will continue to be a critical component of the Niagara Official Plan's development.



There will be no appeals to the Minister's decision on the Official Plan.



Area Municipal Official Plan and Zoning By-law conformity will be required following approval of the Niagara Official Plan



We will continue to create more streamlined and improved processes for development.



Monitoring program will be put in place to track the Official Plan's targets and objectives.