



4800 SOUTH SERVICE RD  
BEAMSVILLE, ON L0R 1B1

905-563-8205

February 15, 2022

**SENT VIA EMAIL:** Association of Municipalities of Ontario; Local Area Municipalities

**RE: Partners for Climate Change Protection (PCP) Program**

Please be advised that Council of the Corporation of the Town of Lincoln at its Committee of the Whole Meeting held on February 07, 2022, passed the following motion in support of the Partners for Climate Protection (PCP) Program:

Resolution Number: CSI-2022-02

Moved by: Councillor Tony Brunet

Receive and file Report PW-01-22 regarding Partners for Climate Protection (PCP) Program; and

Direct the Town Clerk to register the Corporation of the Town of Lincoln as a member of the Federation of Canadian Municipalities' Partners for Climate Protection Program, and

Endorse the resolution attached as "Appendix A" and direct the Town Clerk to circulate this resolution to the Association of Municipalities of Ontario and Local Area Municipalities; and

Direct staff to initiate development of the Corporate Climate Mitigation Plan (CCMP) and the Community Low-Carbon Resilience Plan (CLCRP).

**CARRIED**

A copy of Report PW-01-22 is attached for your reference.

If you have any questions, please do not hesitate to contact the undersigned.

Regards,

Julie Kirkelos  
Town Clerk  
[jkirkelos@lincoln.ca](mailto:jkirkelos@lincoln.ca)  
JK/dp



<b>Subject:</b>	Partners for Climate Protection (PCP) Program
<b>To:</b>	Committee of the Whole – Community Services & Infrastructure
<b>From:</b>	Public Works Department

<b>Report Number:</b>	PW-01-22
<b>Wards Affected:</b>	All
<b>Date to Committee:</b>	February 7, 2022
<b>Date to Council:</b>	February 14, 2022

### **Recommendation:**

Receive and file Report PW-01-22 regarding Partners for Climate Protection (PCP) Program; and

Direct the Town Clerk to register the Corporation of the Town of Lincoln as a member of the Federation of Canadian Municipalities' Partners for Climate Protection Program, and

Endorse the resolution attached as "Appendix A" and direct the Town Clerk to circulate this resolution to the Association of Municipalities of Ontario and Local Area Municipalities; and

Direct staff to initiate development of the Corporate Climate Mitigation Plan (CCMP) and the Community Low-Carbon Resilience Plan (CLCRP).

### **Purpose:**

Further to the declaration of a Climate Crisis, adoption of the Corporate Climate Adaptation Plan (CCAP) and extensive efforts that have been ongoing with Council support, staff continue to implement climate action initiatives. This report summarizes the benefits to the Town of Lincoln in becoming a member of FCM's PCP program and seeks Council approval and support via resolution to proceed with the membership application and initiate development of the Corporate Climate Mitigation Plan (CCMP) and the Community Low-Carbon Resilience Plan (CLCRP).

## **Background:**

### **Climate Change Science**

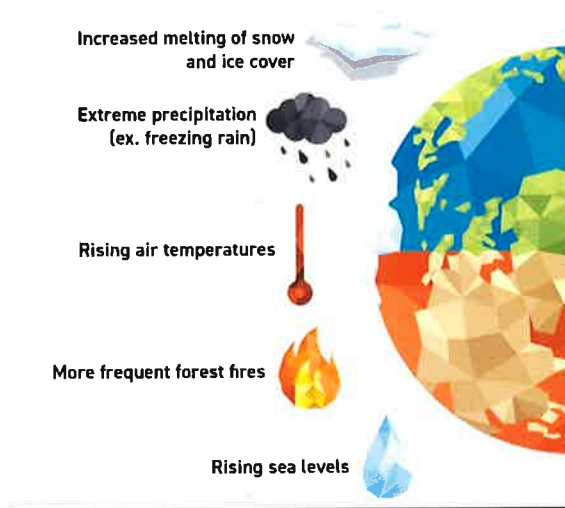
The International Panel on Climate Change (IPCC) says in its 2014 Fifth Assessment Report that warming of the Earth's climate system is unequivocal and that "the IPCC is now 95% certain that humans are the main cause of current global warming." The IPCC concludes this warming is caused primarily by increased atmospheric concentrations of carbon dioxide, methane and nitrous oxide released from burning coal, oil and natural gas and from cutting trees and clearing land for agriculture and development.

The IPCC has a high degree of confidence that the following climate-related impacts are occurring or will occur over the next century in North America:

- More frequent hot and fewer cold temperature extremes, resulting in longer and more frequent heat waves.
- More frequent and intense extreme precipitation events.
- Thawing of permafrost, causing greater emissions of greenhouse gases and leading to disruptions to infrastructure and the traditional ways of life in northern communities.
- Glacial and polar ice melt, causing sea level rise in over 70% of coastal communities.
- Increased risk of extinction for a large fraction of terrestrial, freshwater and marine species, undermining food security in many regions.
- In urban areas, increase risks for people, assets, economies and ecosystems including risks from heat stress, storms and extreme precipitation, flooding, landslides, air pollution, drought, water scarcity, sea level rise and storm surges.
- In rural areas, impacts on water availability and supply, food security, infrastructure, and agricultural incomes, including shifts in food production areas.

Under business-as-usual scenarios, the IPCC has high confidence that global surface temperature is likely to exceed two degrees Celsius by the end of the 21<sup>st</sup> Century. The IPCC observes that warming resulting from human influences could lead to abrupt or irreversible impacts, depending on the rate and magnitude of climate change, and that the more human activities disrupt the climate, the greater the risks. Under a stringent emission reduction scenario, the IPCC concludes that surface warming could be kept under two degrees Celsius, which would reduce the risks and impacts of climate change.

## Impacts of Climate Change in Canada



### Climate Change in Canada

Canada is feeling the impacts of climate change. Climate change is having an impact in communities across the country. Average temperatures are rising, snow and ice cover are declining, and natural disasters, such as wildfires and floods, are affecting more Canadian communities more often. Integrated action on climate change is crucial. An effective response will aim to reduce the rate and magnitude of climate change, while mitigating unavoidable damages from climate change. The direct benefits that come from action include energy cost savings, avoided infrastructure impacts, and local job creation. According to the National Round Table on the Environment and the Economy, costs from climate impacts could exceed \$5 billion in 2020 and grow to more than \$21 billion by 2050.

### By 2100, Lincoln can expect:



extreme hot days  
( $>30^{\circ}\text{C}$ ) each year



Warmer summer  
temperatures



Milder winter  
temperatures  
(more ice & freezing  
rain, & less snow)



more heavy rainfall  
events ( $>10\text{mm}$ )



More frequent &  
severe droughts



More extreme weather  
events (ex. windstorms,  
thunderstorms etc.)



Extended growing  
seasons



Increased spread  
of respiratory,  
waterborne, and insect  
carried diseases  
(ex. Lyme disease)

Local governments play a key role in climate protection. More than 44% of Canada's GHG emissions are under the direct or indirect control of municipalities. Local governments are making important contributions to climate protection by cutting emissions from municipal operations and implementing cost-effective investments and creating incentive-based policies that support sustainable infrastructure and development practices.

### **Lincoln's Commitment to Climate Change Action**

The Town of Lincoln is committed to providing its community with an equitable, sustainable, and prosperous quality of life. This commitment is reflected in several Town initiatives and continues to be a priority at all levels of operations.

The Town's 2014 Official Plan also affirms the commitment to sustainability, in reviewing opportunities for reducing the impact and challenges of climate change.

On March 22, 2021, Council adopted the CCAP, which includes Action 1.7 – Initiate a Corporate Climate Mitigation Plan and Action 1.8 – Initiate a Community Low-Carbon Resilience Plan.

On May 10, 2021, Council completed CCAP Action 1.2 – Declare a climate crisis. Council passed a motion to declare a climate crisis in Lincoln for the purposes of: recognizing the urgent need to take action to mitigate the effects of climate change; deepening the Town's commitment to protecting its economy, ecosystems, and community from climate change; acknowledging that the climate change crisis poses a real serious threat and comprehensive changes and investments will be required to adapt to the impacts of climate change, mitigate climate risk, and prepare for our climate future; and directing the CAO and staff to work with other Local Area Municipalities and across Ontario to make our climate initiatives permanent.

On November 10, 2021, Council approved the 2022 Budget, including item 202485 – Climate Resiliency Program. This program includes development of a Corporate Climate Mitigation Plan and a Community Low-Carbon Resilience Plan.

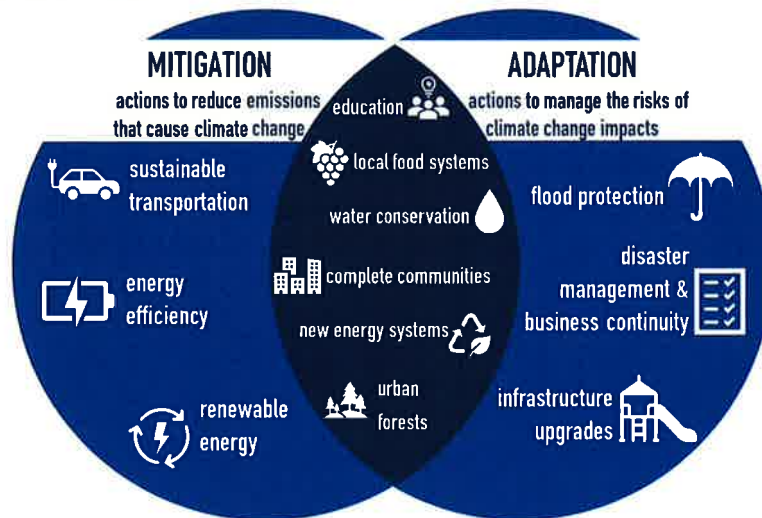
### **Climate Action: Adaptation, Mitigation, and Low-Carbon Resilience**

Mitigation refers to reducing the emissions that cause climate change. Examples include investing in renewable energy and using low-emission vehicles. Adaptation refers to "actions that reduce the negative impact of climate change, while taking advantage of potential new opportunities [and] involves adjusting policies and actions because of observed or expected changes in climate. Examples of adaptation actions include increasing the capacity of stormwater management systems, flood preparedness, and modifying outdoor work policies

Additional benefits of GHG mitigation include:

- Cost savings: Increasing energy efficiency and financial savings through purchasing renewable energy and developing local renewable energy sources.

- Job creation and local economic development: Creating new markets for renewable energy technologies, energy efficiency and sustainable public transit can stimulate the local economy and increase competitiveness.
- Reduced traffic congestion: Promoting public transit, cycling, low-emissions vehicles, car sharing, and active transportation encourages residents to choose more affordable and environmentally friendly travel modes, improving mobility, safety, and public health.
- Improved air quality: Reducing pollutants and airborne particles improves air quality and reduces the incidence of respiratory diseases.



Adaptation and mitigation are not mutually exclusive – some actions, known as low-carbon resilience (LCR) actions, have co-benefits, contributing to both objectives. LCR is the strategic integration of climate change adaptation and emissions reductions. Taking measures that integrate the two climate action streams enhances the effectiveness of both strategies, avoids risks, and generates economic, ecological and social benefits. An example of LCR is conserving and expanding the urban forest – which assists in adapting to extreme heat, mitigating GHGs emissions, and potentially lowering energy use in summer and winter.

## Report:

### Partners for Climate Protection (PCP) Program

Initiated in 1994, the PCP program is a network of Canadian municipalities that have committed to reducing GHG emissions and acting on climate change. The program received financial support from FCM's Municipal Climate Innovation Program and Green Municipal Fund which are both supported by the Government of Canada and ICLEI Canada. Delivered by FCM and ICLEI - Local Governments for Sustainability, the PCP program provides tools and resources to support municipalities in achieving emissions



reduction targets. In 2020, the PCP network reached over 490 members representing over 70% of the Canadian population.

PCP members commit to moving through the program framework, which aligns with the FCM Maturity Scale for Municipal GHG Emissions Reduction, and consists of five milestones:

- **Milestone Zero – Council resolution to join PCP**
- **Milestone One – Create a GHG emissions inventory and forecast**
  - Inventory of energy consumed and solid waste generated at Town owned and operated buildings, street lighting, the municipal fleet etc.
  - A GHG emissions inventory can help you track emissions, energy use and energy spending as well as measure your progress over time. Having a forecast allows you to project future emissions based on assumptions about population, economic growth, fuel mix, and technological change.
- **Milestone Two – Set an emissions reductions target**
  - A GHG reduction target sets the tone and direction for emission reduction efforts. Targets should be achievable, while also inspiring ambitious action and are expected to align with federal, provincial and peer municipality targets.
  - Two targets: municipally owned operations and community-wide emissions.
- **Milestone Three – Develop action plan**
  - Summarize baseline emissions forecasts and targets; propose GHG reduction actions; and determine implementation strategies and resources required
  - A local action plan outlining how Lincoln will achieve its emissions reduction target through municipal operations (CCMP) and community-based initiatives (CLRP). Stakeholder engagement is critical to development, and ownership of the plan by municipal staff and the community will ensure long-term success.
- **Milestone Four – Implement the action plan or set of activities**
  - Identify measures to develop and/or incorporate into existing projects
  - Estimate and track lifecycle costs, payback periods, resource savings, direct and indirect benefits, and potential sources of internal and external funds.
- **Milestone Five – Monitor progress and report results**
  - Evaluate project outputs against base projections, adjusting activities as needed.

Membership in the PCP program is free and provides the following resources:

- PCP Hub and Milestone tool – an online portal to connect with resources and guidance to track milestone status and goals. The portal links together peer municipalities to share best practices, project information and strategies. The portal will allow the Town to:

- Develop knowledge and skills from resources and instructions for each milestone
- Access a scenario builder to estimate potential GHG reductions
- Set targets and track GHG reductions from corporate and community sources
- A GHG inventory
- Public Dashboard
- PCP program advisor
- Increased access to funding opportunities for GHG-reducing initiatives
- Technical project support and RFP development support

Member responsibilities include:

- Passing a joining resolution through council;
- Moving through the Milestone Framework within 10 years of joining;
- Reporting on progress at least once every two years, with support from the PCP; and
- Actively participating in program activities and sharing experiences with other members.

### **Scope and Deliverables**

The PCP Program will support the develop of two plans: 1) a Corporate Climate Mitigation Plan (CCMP) and 2) a Community Low-Carbon Resilience Plan (CLCRP).

**Corporate Climate Mitigation Plan:** A CCMP will address the GHG emissions from the Town's infrastructure, assets, operations, and services. Examples of Corporate Climate Mitigation Actions include green fleets, sustainable energy initiatives, or active transportation planning.

**Community Low-Carbon Resilience Plan:** A CLCRP will evaluate both adaptation and mitigation strategies, as well as identify co-benefit opportunities from community driven climate action. The purpose of the plan is to develop a set of LCR actions that will be accomplished in partnership with residents, public and private sectors, and local stakeholders. Examples of Community LCR actions include: building resilient irrigation networks, promoting resident energy conservation, or partnering with local community groups to advance sustainable actions.

### **Corporate Environmental Committee**

The Climate Change Coordinator role is to facilitate the development process of the CCMP and CLCRP. To ensure these plans reflect community needs, staff expertise and corporate priorities, and can ultimately be integrated across the municipality, most of the findings for each milestone will be derived from or refined through engagement with the local community and the Corporate Environmental Committee. This committee is multi-departmental, comprised of Town staff with diverse expertise and experience with the



Town's communities, infrastructure, assets, and services. Ownership for each department's CCMP actions will live with the department.

The Corporate Environmental Committee includes representatives from:

- Planning and Development
- Community Services
- Facilities and Parks
- Public Works
- Fire and Emergency Services
- Economic Development & Tourism
- Communications

### **Anticipated Touchpoints**

The plans will be primarily informed by the subject matter experts in the community and the Corporate Environmental Committee. Input on the plan will be gathered from SMT, Council, stakeholders, subject-matter experts, and the community on an ongoing basis.

**Community:** Ongoing citizen engagement will be an important part of the Corporate Climate Mitigation Planning process. Anticipated touchpoints with community stakeholders, residents, and businesses may include: online surveys, information booths, engagement workshops.

**Senior Management Team:** Consultation with SMT will occur on a quarterly basis to provide updates, seek feedback, and ensure input is obtained from all management levels.

**Community Services and Infrastructure Committee:** The Committee will be updated on the progress on the Climate Mitigation Plan and related activities through presentations and reports as needed. Drafts of the Corporate Climate Mitigation Plan and the Community Low-Carbon Resilience Plan will be presented to the committee for review and feedback before finalization.

### **Timeline**

It is anticipated the concurrent development of the CCMP and CLCRP will take 12-18 months, with community and staff engagement activities beginning in January 2022. A detailed timeline will be provided to Council, SMT, and the community after initial meetings with FCM-ICLEI staff and the Corporate Environmental Committee in Q1 2022.

### **Planning Principles**

The CCMP and CLCRP are intended to be living documents and will be updated annually to reflect implementation progress, new opportunities, and scientific advancements. In order for Lincoln to successfully develop, implement and continuously improve the plans, it is important that the following four key principles are met:

**Financial & Human Resources:** It is anticipated that applicable funding and staffing requests will be made on a project-by-project basis. The Town is committed to maximizing the co-benefits of actions to achieve multiple environmental, social, and financial sustainability goals.

**Internal & Community Education & Training:** In order to successfully develop and implement the CCMP and CLCRP, the Town will need to leverage collective knowledge, partnerships, networks, resources, and leadership. It is important to build internal and community awareness of climate change in order to build capacity to take meaningful and sustainable climate action.

**Strategic Partnerships:** The success of the CCMP and CLCRP depends on the individual and organizational capacity to collaboratively take leadership. The Town will continue to leverage existing community partnerships (for example, with the NPCA and Brock University); form new partnerships to achieve shared goals, identify co-benefits, maximize resources; and encourage collaboration at the residential, institutional, industrial, and commercial scales.

**Governance:** Moving from awareness and planning to implementation and continuous improvement requires strong and committed leadership. The Town of Lincoln will retain ownership and governance of the CCMP and will take responsibility for the implementation and continuous improvement of the plan, as the plan is corporate in scope. The Town will lead the governance of CLCRP, though action implementation will be at the residential, institutional, industrial, and commercial levels. It will take a collaborative approach focused on sustained and significant action to realize and prioritize the change that is needed.

The Town of Lincoln is committed to taking an inclusive and collaborative approach to build corporate and community capacity to mitigate climate change, as many actions will require leadership and support from multiple departments and community groups. Due to the scale of climate action, it will take several champions (inside and outside the municipality) to keep climate initiatives alive in the face of many competing priorities.

### **Financial, Legal, Staff Considerations:**

#### **Financial:**

There are no administration fees or costs associated with becoming a member in the PCP program, receiving advisory support, or accessing resources. Resources required to pursue PCP Milestones – for example, the costs of conducting a GHG inventory and developing an action plan, or any other related resources – are included in the budgets process for Council approval. It is anticipated that when staff begin implementation of the actions outlined in the CCMP, applicable funding requests will be made on a project-by-project basis.

#### **Staffing:**

The purpose of this project is to build corporate and community capacity for climate change action with existing staff and the Corporate Environmental Committee. No additional staff is required at this time. Expected input will be 1 on 1 meetings and facilitated workshops to identify and evaluate GHG emissions and then to identify

mitigation next steps. It is also anticipated that the Town's communication staff are utilized to prepare materials for public engagement/education initiatives and to assist with the notifications relating to the plans.

Legal: N/A

### **Public Engagement Matters:**

Ongoing community engagement with residents, stakeholders, and industry, will be an important part of the CCMP and CLCRP. Anticipated community touchpoints may include online surveys, information booths, and engagement workshops.

### **Conclusion:**

The development of a Corporate Climate Mitigation Plan and a Community Low-Carbon Resilience Plan aligns with the Corporate Climate Adaptation Plan and the declaration of a Climate Crisis. Council and the community will be engaged in the evidence-based planning, consultation, implementation, and decision-making processes outlined in this report.

Respectfully submitted,

Shannon Fernandes  
Climate Change Coordinator  
905-563-2799 ext.281

### **Appendices:**

Appendix A: PCP Joining Resolution  
Appendix B: FCM Maturity Scale for Municipal GHG Emissions Reduction  
Appendix C: PCP Milestone Deliverables

### **Report Approval:**

Report has been reviewed by the Director of Public Works. Final approval is by the Chief Administrative Officer.