

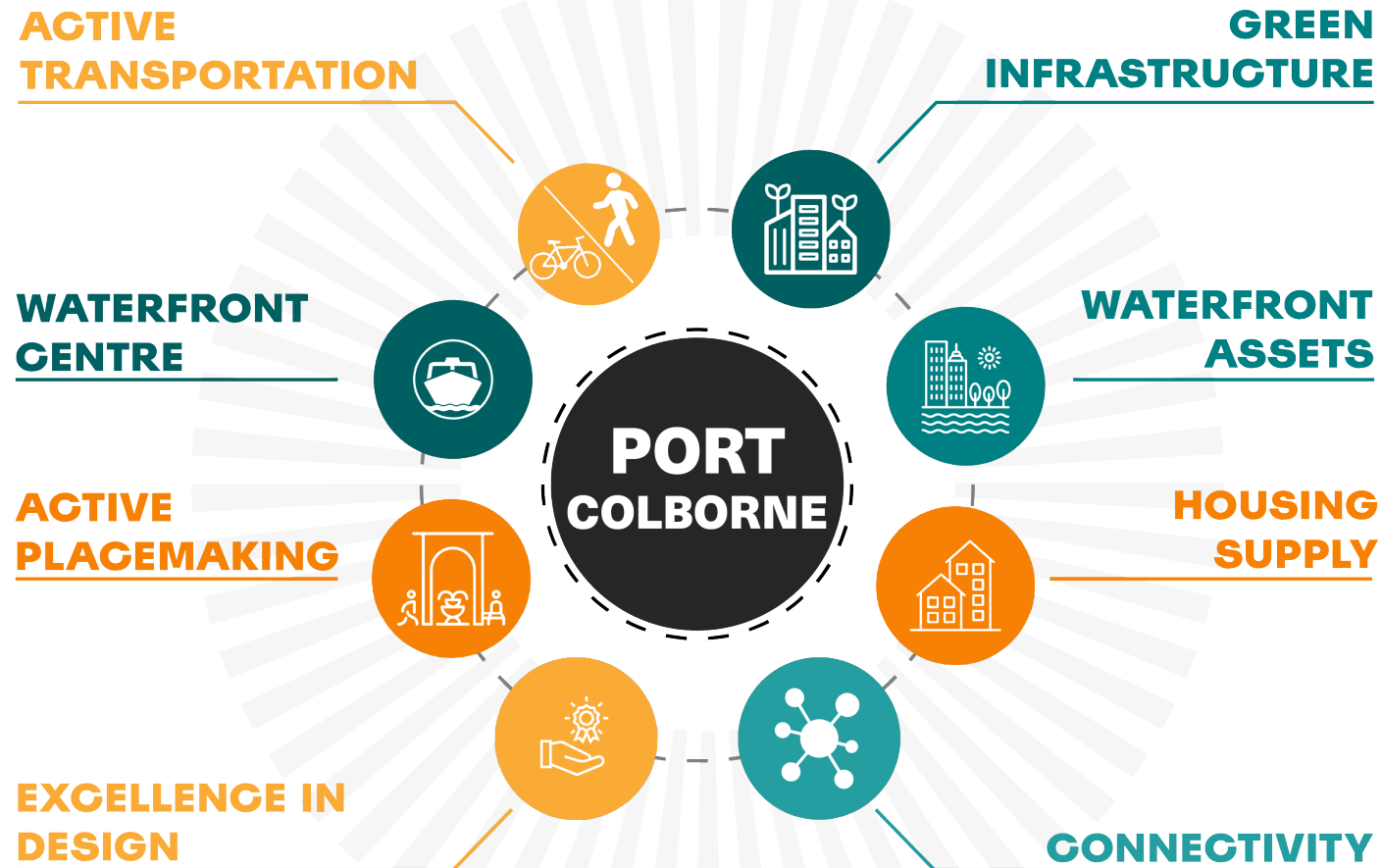
# Marina District Revitalization Plan

Port Colborne

Report 2022-59  
Appendix A

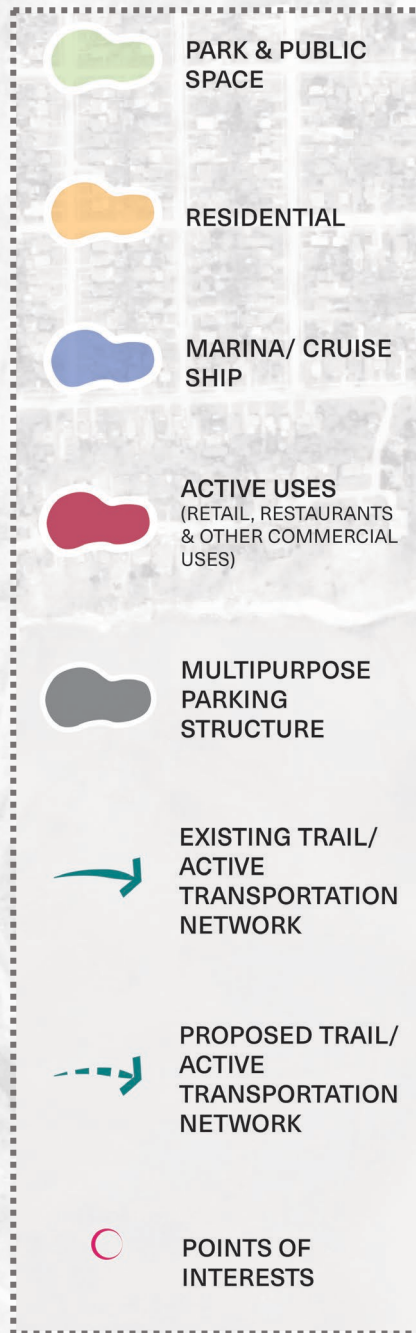
# BUILDING A COMMUNITY AROUND THE WATERFRONT CENTER

# Guiding Principles





# LAND USE CONCEPT





# PHASE 1

Multi- Use Trail

King Street Public Realm

Sugarloaf Marina

Promenade & Waterfront Centre



# PHASE 2

## Retrofitting the Grain Terminal





# PHASE 2

## Retrofitting the Grain Terminal



Former Grain Silo at ▲  
Inner Nordhavn (2012)





# PHASE 2

## Retrofitting the Grain Terminal



Former Grain Silo at ▲  
Inner Nordhavn (2012)



Grain Silo retrofitted for  
residential use (2020) ►





# PHASE 2

## Retrofitting the Grain Terminal



*The Silo, Nordhavn*

# FLOOD MITIGATION STRATEGIES

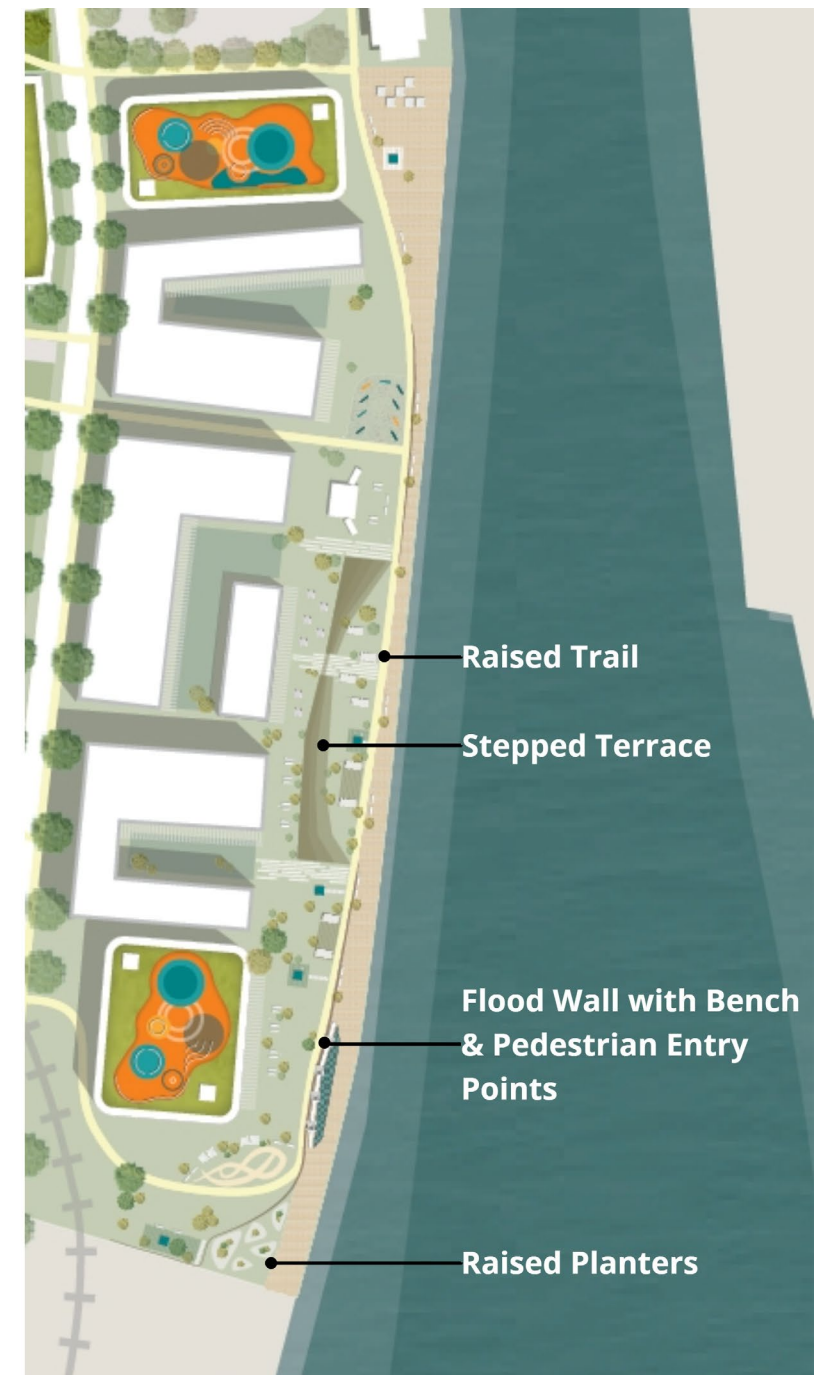


# Raised Promenade and Bike Path



*West Eau Claire, Calgary*

Permanent on-site infrastructure incorporating a multi-use pathway elevated above flood event levels

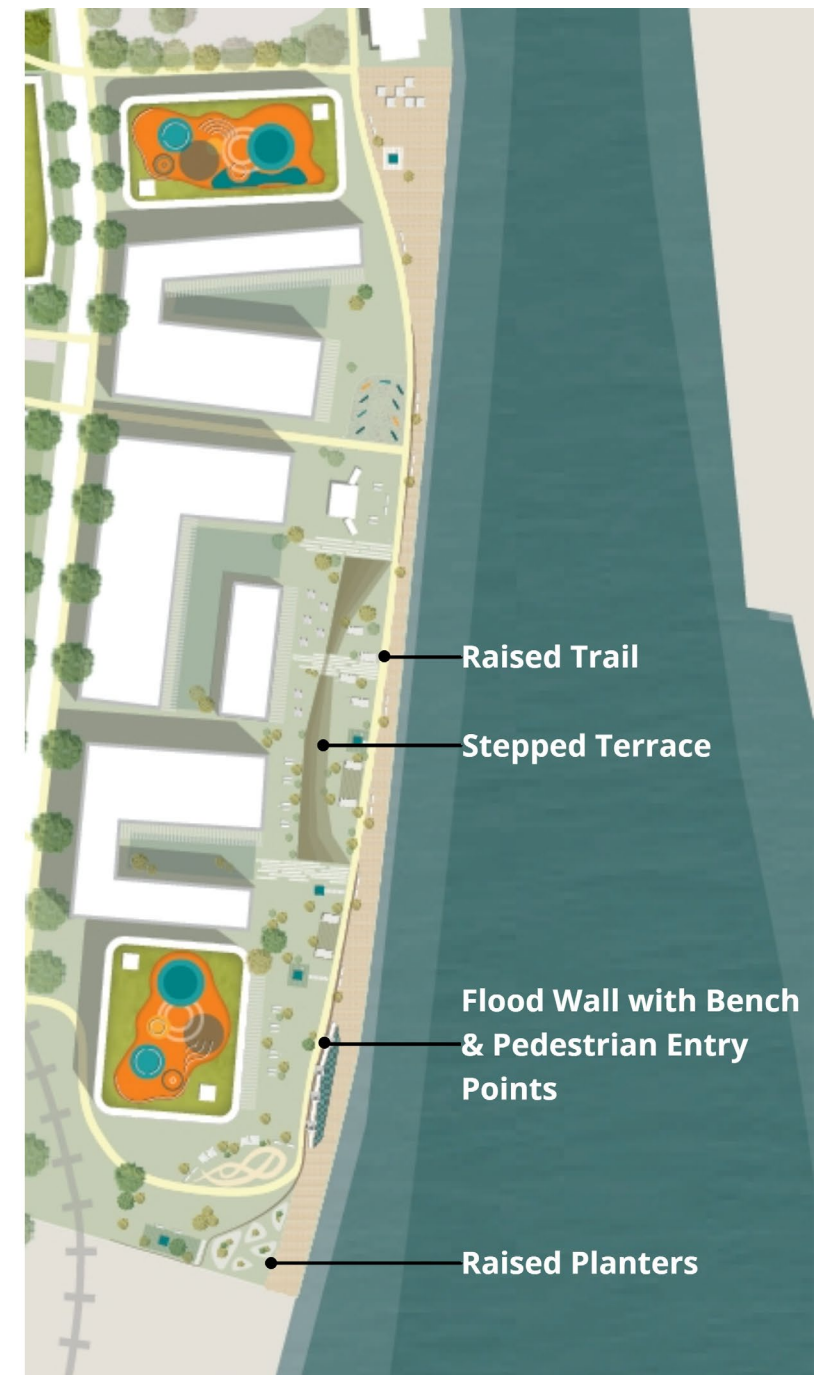


# Stepped Terrace



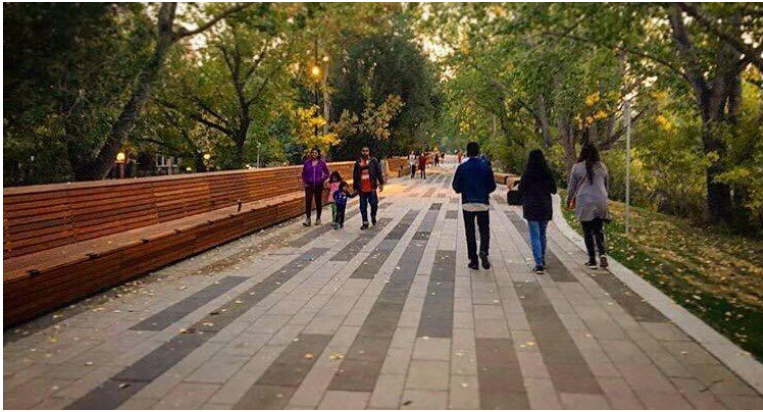
*West Eau Claire, Calgary*

Permanent on-site infrastructure, utilizing earthwork, berms and reinforced terraces to mitigate flooding events





# Flood Wall and Bench



Flood Bench



Pedestrian Entry Points



Flood Wall

*West Eau Claire, Calgary*

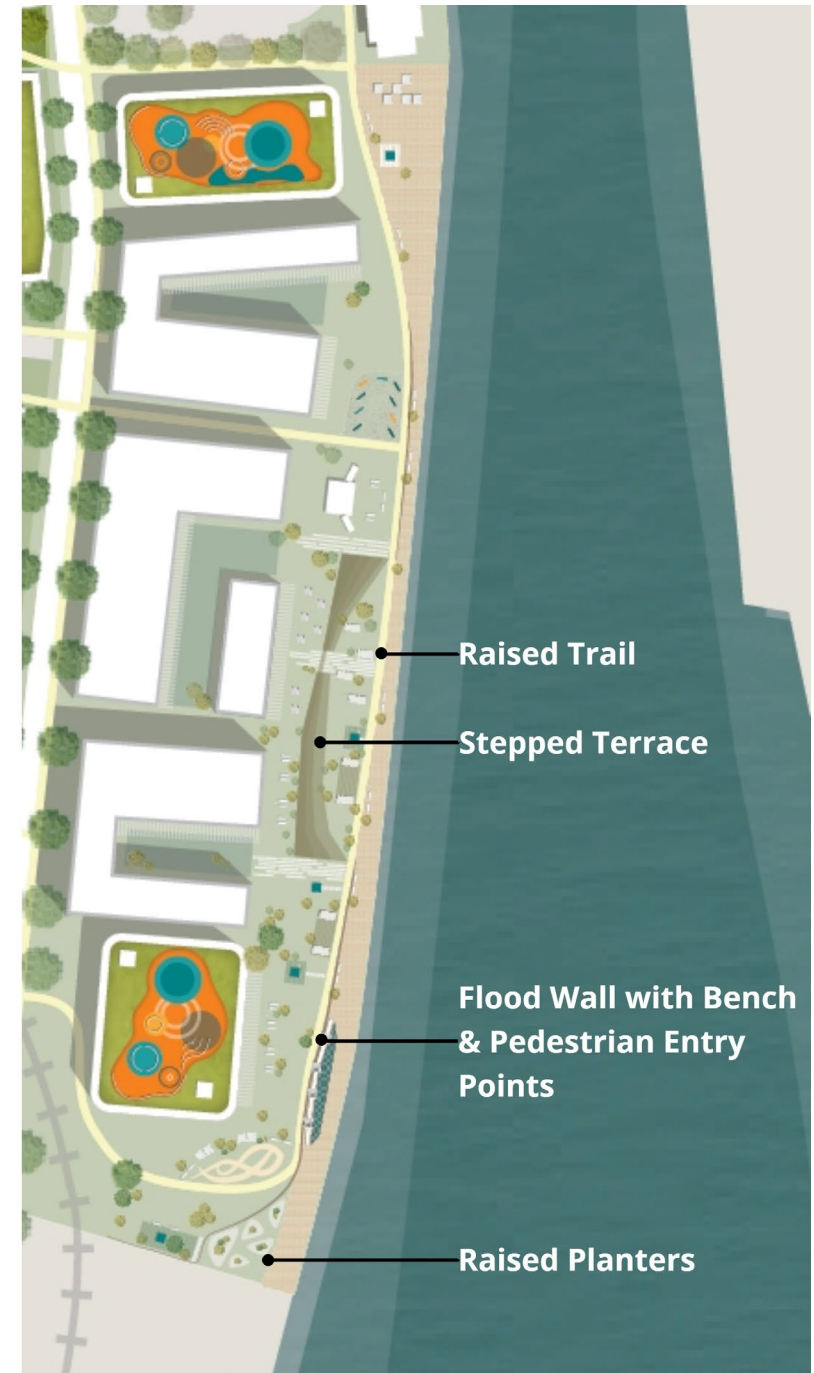




# Raised Planters



Stone planters work as temporary flood barriers





# Active Placemaking



Repurposed Shipping Containers

Murals and arts by local artists



Splash Pad in Summer

Ice Rink in Winter



## REFERENCES (L to R)

- WendellandCarolyn/istockphoto. (n.d.). Boat Storage.
- Jodie Herrera. (2018). The Albuquerque Rail Yards.
- (n.d.). Newmarket Riverwalk Commons.
- John Bkila. (2019). Burlington's Spencer's reopens, skating rink to open soon following water main break.



# Active Placemaking

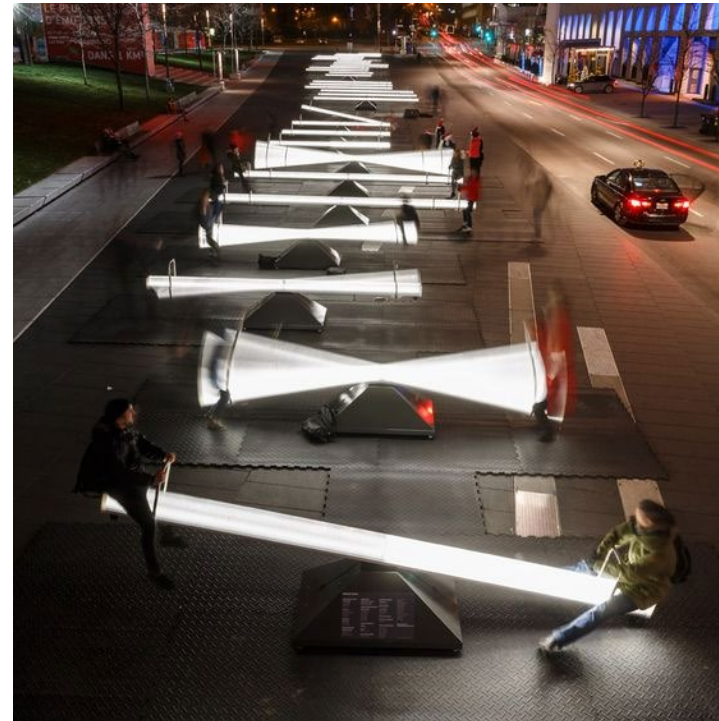


Marina Trail

## REFERENCES (L to R)

- SWA Group. (n.d.). Sava Promenada at the Belgrade Waterfront.
- Jenna McKnight. (2015). Designers create winter installation for Montreal featuring 30 glowing seesaws.
- Bernard Louis De Koven. (2017). The Bench – Visions of Art at Play.

## Interactive Activities



## Seating





# A brighter future ...

