



Luanne Patterson
Senior System Manager
Environmental Assessment

Directrice de l'analyse des systèmes
Évaluation environnementale

Box 8100
Montreal, Quebec Canada
H3C 3N4

Boite 8100
Montréal, Québec/Canada
H3C 3N4

April 1, 2022

RE: CN RIGHT-OF-WAY VEGETATION CONTROL

Dear Mayor,

CN remains committed to running its railway safely and efficiently and building a level of trust and collaboration with the communities where we do business.

To that end, we are reaching out to advise you of our vegetation control activities in your area between April and October 2022. A regularly updated schedule is available at www.cn.ca/vegetation

If not managed properly, trees, brush or other vegetation can severely compromise rail and public safety. Vegetation can impede the view motorists have of oncoming trains and increase the risk of crossing accidents. Moreover, unwanted vegetation can damage the integrity of the railbed, interfere with signals and switches, contribute to track side fires, compromise employee and citizens safety, reduce visibility for train crews at road crossings/train control signals and track side warning devices, to name a few of the potential risks.

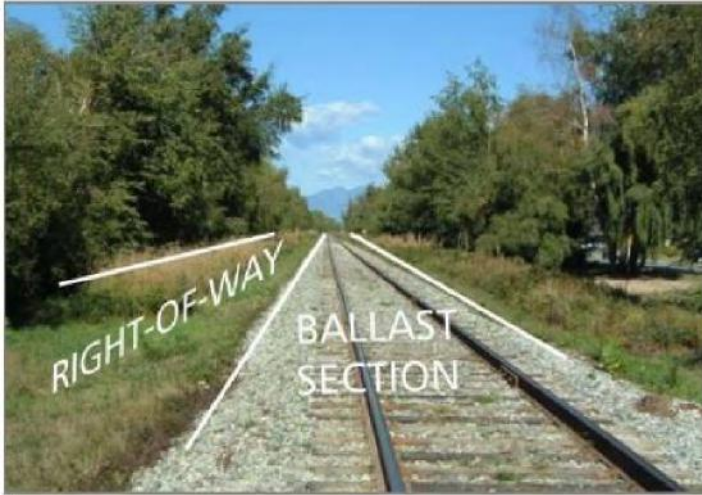
Our annual vegetation control program is designed to mitigate these risks by managing brush, weeds and other undesirable vegetation. CN's vegetation control program is critical to ensure safe operations and contributes to the overall safety of the communities in which we operate.

Control measures

CN manages vegetation using both chemical and mechanical methods. We are sensitive to concerns your community may have regarding chemical vegetation control and I would like to assure you that at CN, we strive to safeguard our neighbouring communities and the environment.

The track infrastructure is composed of two main sections, the ballast section typically ranging from 16-24 feet (which is primarily gravel and supports the track structure) and the right of way portion (which is the area outside of the ballast section to the CN property boundary).

The 16-24 foot ballast section and the areas around signals and communications equipment that are critical for safe railway operations will be managed using chemical methods. Application in these safety critical areas is done by spray trucks or spray trains with downcast nozzles that spray a short distance above the ground surface with shrouded booms, specially designed to limit the chemicals from drifting. The right-of-way section is maintained using mechanical control methods such as mowing or brush cutting and may be chemically treated to control noxious or invasive weeds or brush.



CN will use chemical control techniques on the ballast section and specific locations of the right of way throughout the network for safety reasons. Furthermore, when chemicals are applied via spray train or truck, as outlined in the photo below, additives called surfactants are included to make the chemical work better.



CN has retained professional contractors qualified to undertake this work. They are required to comply with all laws and regulations applicable to CN. In addition, the contractors will ensure that vegetation control is performed with consideration of the environment and in accordance with the highest industry standards.

Inquiries

Should your community have any noxious weed removal requests, we ask that you contact CN's Public Inquiry Line at contact@cn.ca or fill out the form at www.cn.ca/vegetation before June 1, 2022 with the specific information and location. CN will make every effort to include those locations as part of our 2022 Vegetation Management Program. All notices sent after the above-mentioned date will be included in the 2023 Vegetation Management Plan.

We look forward to working with you and answering any questions you may have regarding our vegetation control activities in your community.

Please find attached the notices CN is publishing in local papers to advise the public. We would kindly ask that you post copies on your community's website and at City Hall or other central locations for a wider distribution.

For any questions or more information, please contact the CN Public Inquiry Line by telephone at 1888-888-5909, or by email at contact@cn.ca.

Please also find attached a list of FAQs regarding the program that may be of further assistance. Best regards,

A handwritten signature in blue ink, appearing to read 'Luanne', with a stylized flourish at the end.

Luanne Patterson
Senior System Manager, Environmental Assessment