

# WE ARE BRIDGING THE WATER GAP

Each year, 2.6 million m<sup>3</sup> of water is taken from the water plant and distributed to Port Colborne homes and businesses. The plant is monitored 24 hours a day.

\$119.7  
million

WHAT IS NEEDED

WHAT WE'RE SPENDING

\$1.5  
million

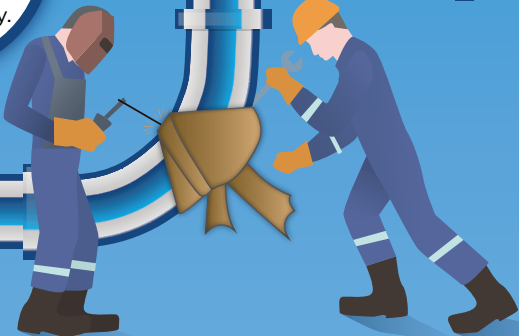
## STATISTICS

A leak of 1 litre per second would fill an Olympic sized swimming pool in a month.



There are 119 km of watermains in Port Colborne & 600 fire hydrants across the City.

Water is tested more than 1800 times per year to ensure quality and safety.



Water loss has been reduced by 12% over the last 5 years.

**WATER BILL** PORT COLBORNE

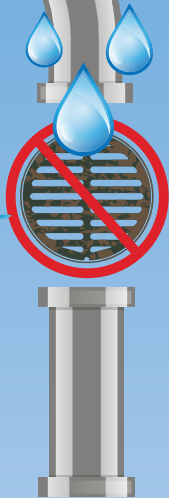
John Doe  
1234 Water Way  
Port Colborne, ON  
L1S 2R4

PMT WATER PAYMENT	69.48
PMT SEWER PAYMENT	63.16
WATF WATER FIXED	26.53
WATR WATER USAGE	27.61
WATR WATER USAGE	10.74
SEWF SEWER FIXED	32.53
SEWR SEWER USAGE	27.35
TOTAL DUE:	\$113.56

Did you know, when you pay your water and wastewater bill, **62%** goes to Niagara Region?

Do you have a sump pump or roof leaders? Do you know where they go? Please note, these should not be connected to the sewer.

Have questions?  
Give us a call  
905-835-2900.



## WASTEWATER STATISTICS

Each year we return 4.8 million m<sup>3</sup> to the Wastewater Treatment Plant.

Treating inflow and infiltration at the Wastewater Treatment Plant costs \$\$\$

Half the volume of wastewater treated is unnecessary infiltration.



**PORT COLBORNE**

For more information please visit [www.portcolborne.ca/water](http://www.portcolborne.ca/water)

\*BASED ON PSD ASSET MANAGEMENT STATISTICS REPORT COMPLETED IN 2019.